



IPEDS Updates

Mississippi Keyholder Conference Call

Wednesday, April 30th • 10:00am

Agenda

- Introductory Remarks
 - Revised contact information
- Review 2013/14 Collection
 - HR Revisions & Proposed Changes
- 2014/15 Data Collection Changes
- 2015/16 Data Collection Changes
- IPEDS Time Burden Estimates

IPEDS Users

- Now have up to 7 additional users
 - Tools → Additional Users/Passwords
 - Specific contact information for Library
 - In addition to HR and Finance
 - Prior survey respondent and Library director will be contacted based on prior ALS submission

Reporting Noncompliance

- Noncompliance encompasses both timely and accurate reporting
- As of 10/2012, the fine amount for IPEDS reporting noncompliance has increased
- Fine of up to \$35,000 for each violation of any provision of Title IV, or any regulation or agreement implementing that Title

Review of 2013/14 Collection

- It's over.
- IPEDS has begun more thoroughly investigating:
 - Explanations vs. Confirmations
 - Large changes in data
 - Coordinator outreach
- Prior Year Data Revision System
 - 21 instances across 7 surveys
(Last year was 10 instances across 6 surveys)

One Last Chance Policy

- Allows institutions one chance to submit data after the deadline
- After due date, Help Desk contacts institutions that have not already used OLC
 - They are given 2 weeks
 - Help Desk enters, edits, works with keyholder to get it clean and locked

One Last Chance Policy

- Institutions that *have* used OLC are not contacted
 - If institution contacts Help Desk, they are given 24 hours to submit the data
- Most institutions using OLC are non-coordinated
- Requested access to know who has used OLC

HR

- 2012: New format + SOC =
- What IPEDS learned:
 - SOC was not designed with postsecondary education in mind
 - NCES didn't anticipate many of the problems KHs had in interpreting screens, instructions
- What IPEDS did:
 - Clarified screens, rewrote instructions, new FAQs



HR – ~~Postsecondary Teachers~~

- No more Postsecondary Teachers terminology
- Returned to the old terminology:
 - Instructional staff, includes:
 - Primarily instruction
 - Instruction combined with research, public service
 - Research staff
 - Public Service staff

HR – Categories Renamed

- **Old:** Community Service, Legal, Arts, and Media Occupations
- **New:** Community, Social Service, Legal, Arts, Design, Entertainment, Sports, and Media Occupations (21-0000 + 23-0000 + 27-0000)

- **Old:** Other Teaching and Instructional Support Occupations
- **New:** Student and Academic Affairs and Other Education Services Occupations (25-2000 + 25-3000 + 25-9000)

- **Old:** Library and Instructional Support Occupations
- **New:** Library and Student and Academic Affairs and Other Education Services Occupations (25-4000 + 25-2000 + 25-3000 + 25-9000)

HR - Clarifications

- SOC codes added to screens
- One contract type category has been expanded:
 - **Old:** Multi-year contract
 - **New:** Multi-year or continuing or at-will contract
- See the instructions for the **New Key Reporting Concepts** section

HR – Further Help Needed

- What issues are you struggling with in the HR survey?
- The SOC 2018 Revision is underway!
 - NCES has proposed changes that will help better align the SOC with postsecondary education
 - Submit comments to the Federal Register notice

HR – SOC Classifications

- 23 Major occupational groups
- 97 Minor occupational groups
- 461 Broad occupations
- 840 Detailed occupations

Major group:	25-0000 Education, training, and library occupations
Minor group:	25-1000 Postsecondary teachers
Broad occupation:	25-1060 Social science teachers, Postsecondary
Detailed occupation:	25-1064 Psychology teachers, Postsecondary

HR – SOC Classifications

- Suggesting new or revised occupations:
 - Provide specific information on the nature of the work performed
 - Include specific activities and tasks
 - Indicate which activities and tasks are required of all workers in this occupation
 - Keep in mind how the work performed is distinct from that of other detailed SOC occupations

2014/15 Data Collection

	Registration (3 weeks)	Fall (6 weeks)	Winter (9 weeks)	Spring (17 weeks)
Open date	August 6	September 3	December 10	December 10
Keyholder deadline	August 27	October 15	February 11	April 8
Coordinator deadline	August 27	October 29	February 25	April 22
Survey components	Registration Mapping Institution ID IC Header	IC C E12	SFA GR150 GR200 ADM	EF F HR AL

2014/15 Changes: IC

- Deleted:
 - Early fall enrollment estimates
 - Admissions counts (moved to winter)
- Added:
 - Services available to veterans
 - Post-9/11 GI Bill, Yellow Ribbon program
 - Credit for military training
 - Dedicated point of contact for support services for veterans, military service members, and their families
 - Recognized student veteran organization
 - Member of Servicemembers Opportunity Colleges
 - URL for tuition policy specifically related to veterans
 - Annual total library expenditures

2014/15 Changes: SFA

- Added:
 - Post-9/11 GI Bill benefits
 - DoD Tuition Assistance
 - Number of undergraduate and graduate students receiving benefits
 - Total dollar amount of tuition and fee benefits awarded to them through the institution
 - Important to know the source of these benefits at your institution (Financial Aid or Bursar's office?)

2014/15 Changes: ADM

- Newly separated component in Winter
- Admissions items from IC – nothing new
- Prior year revisions can be made during fall or winter of 14/15 for 13/14 collection
- Have to report on the previous fall semester
 - No longer an option to report prior fall data
- **IPEDS providing clarification of what is an ‘application’**

2014/15 Changes: AL

- New Spring component
- Collected only:
 - From degree-granting institutions only
 - If total annual library expenditures > 0
- Questions about staff will be moved to the HR component for 14/15
- If expenditures > \$100,000, additional information about staffing, preservation, interlibrary loans, etc.
- **Academic Libraries resource center being developed**

2014/15 Changes: F-FP

- Better align FASB reporting institutions with GASB
- Not applicable to most of us
- Can provide you with information on these changes if requested

2015/16 Changes: OM

- Outcome Measures data collection will begin in **2015-16**
- Institutions reporting on their **2007** cohorts
- Collect outcome measures data on 4 degree/certificate-seeking student cohorts (as reported in Fall Enrollment)
 - Full-time, first-time students
 - Part-time, first-time students
 - Full-time, non-first-time entering students
 - Part-time, non-first-time entering students
- **Data will not be disaggregated by race, ethnicity, or gender**

2015/16 Changes: OM

- For each cohort, 6 years after the cohort enters the institution report:
 - Received award
 - Did not receive award
- For each cohort, 8 years after the cohort enters the institution report:
 - Received award
 - Did not receive award, still enrolled at reporting institution
 - Did not receive award, subsequently enrolled at another institution
 - Did not receive award, subsequent enrollment status unknown

Recent Technical Review Panels

- #42 – Defining an IPEDS Institution (February 2014)
 - Open for comments until May 2, 2014
 - https://edsurveys.rti.org/ipeds_trp/
- #41 – Managing Reporting Burden (March 2013)
- #40 – Additional Selected Outcomes of the Advisory Committee on Measures of Student Success (October 2012)

IPEDS Training Opportunities

- **Mississippi keyholder/staff on-site training**
- Face-to-face IPEDS workshops
 - Co-hosted by statewide/regional/national groups
- Online keyholder courses
 - Self-paced training (10-15 hours)
- Online video tutorials
 - Overview of each survey component (~5 min)
 - IPEDS definitions and key concepts
 - Data tools
 - IPEDS related tutorials
 - New keyholders
 - Net price calculator

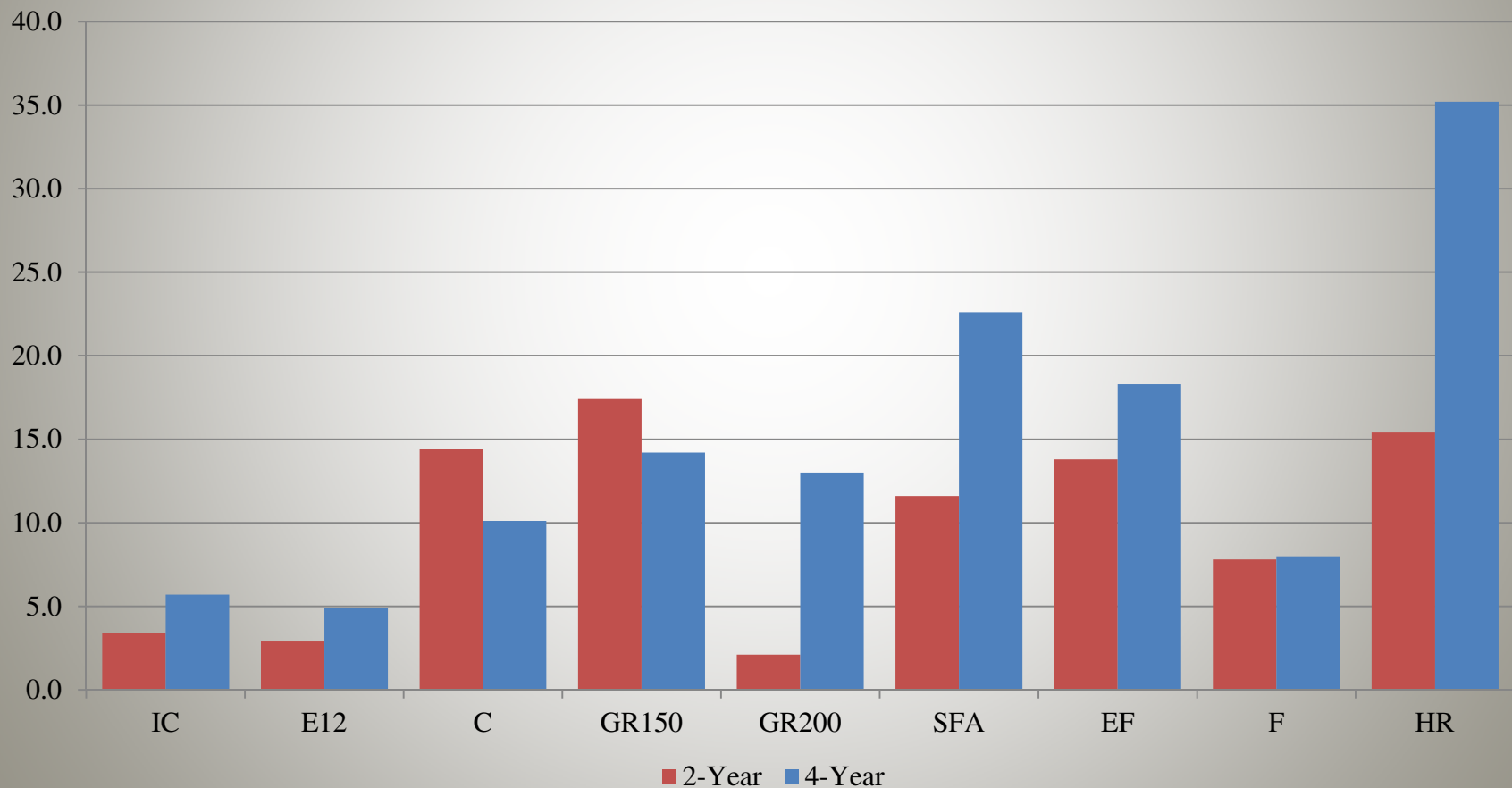
IPEDS Time Burden Estimates

2012/13 Collection

	N	Min	Max	Mean	SD
GR200	30	10 min	30.0	3.6	6.3
E12	31	20 min	16.0	3.9	4.4
IC	30	20 min	24.0	4.5	5.8
F	28	1.00	30.0	7.6	6.1
C	30	45 min	72.0	12.4	15.7
EF	31	45 min	82.5	15.8	20.5
GR150	30	20 min	140.0	16.0	28.5
SFA	24	2.00	80.0	16.6	19.2
HR	31	15 min	200.0	24.9	41.4

IPEDS Time Burden Estimates 2012/13 Collection

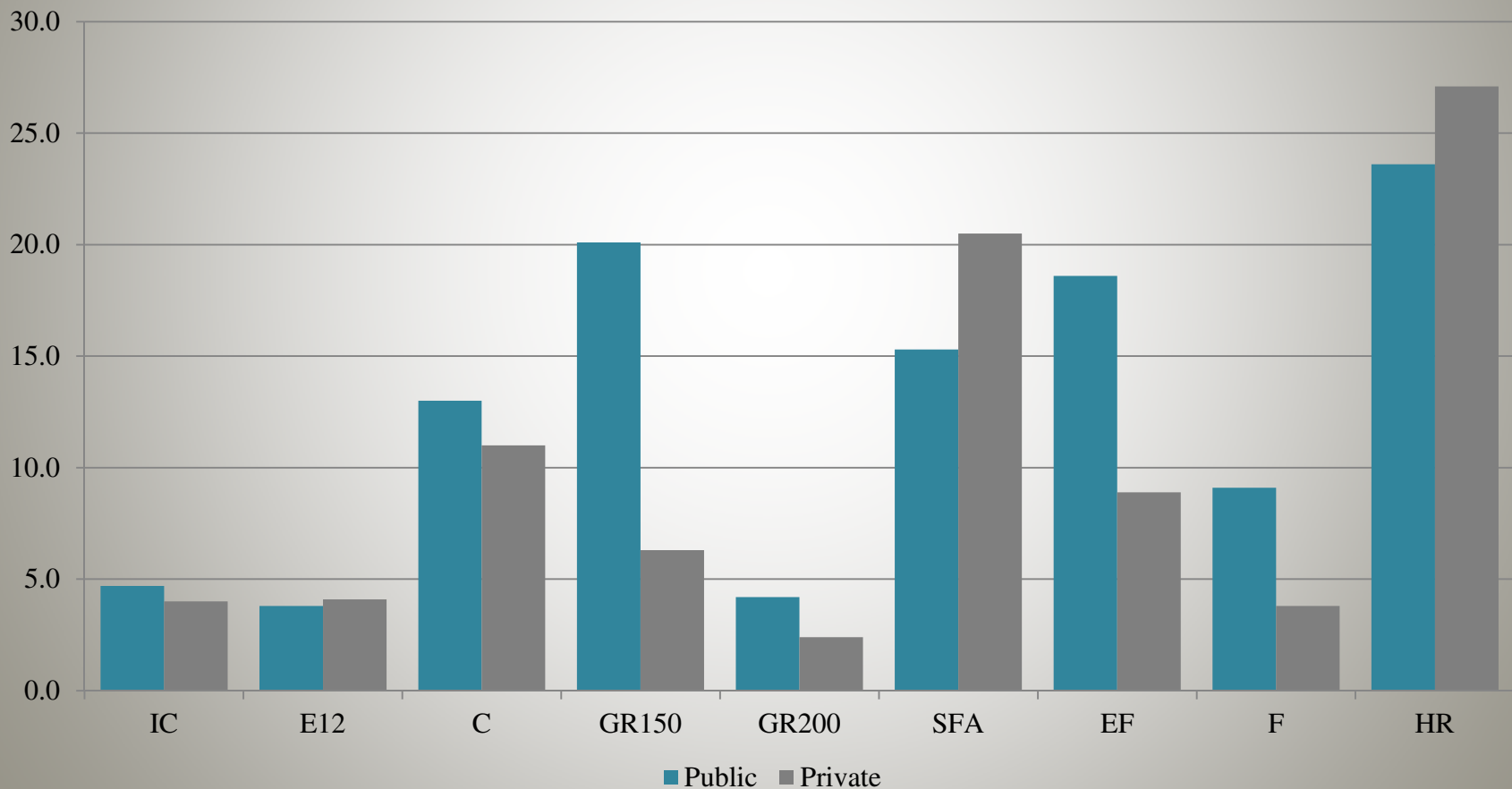
Average Time to Complete IPEDS Components
12-13 Collection



IPEDS Time Burden Estimates

2012/13 Collection

Average Time to Complete IPEDS Components
12-13 Collection

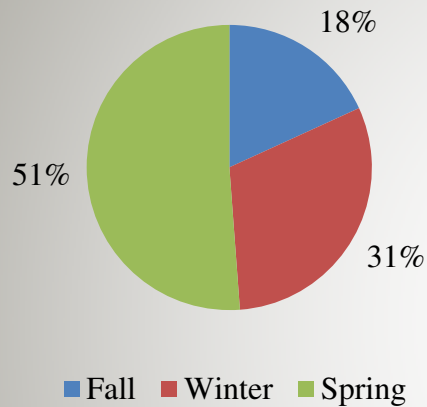


IPEDS Time Burden Estimates

2012/13 Collection

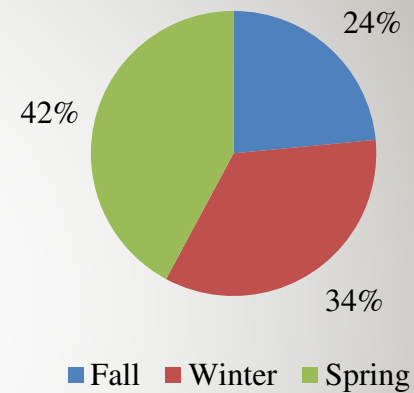
Percent of Time by Collection

Four-Year



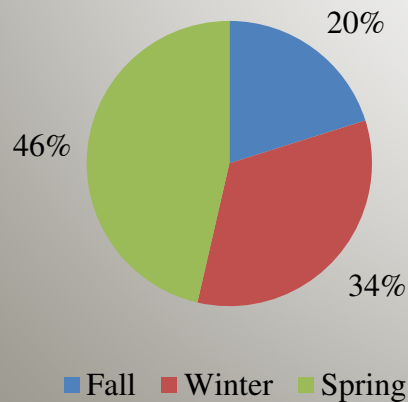
Percent of Time by Collection

Two-Year



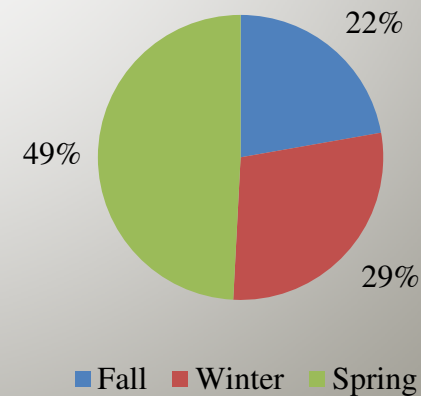
Percent of Time by Collection

Public



Percent of Time by Collection

Private





Contact Information

Eric Atchison

601-432-6288

eatchison@mississippi.edu