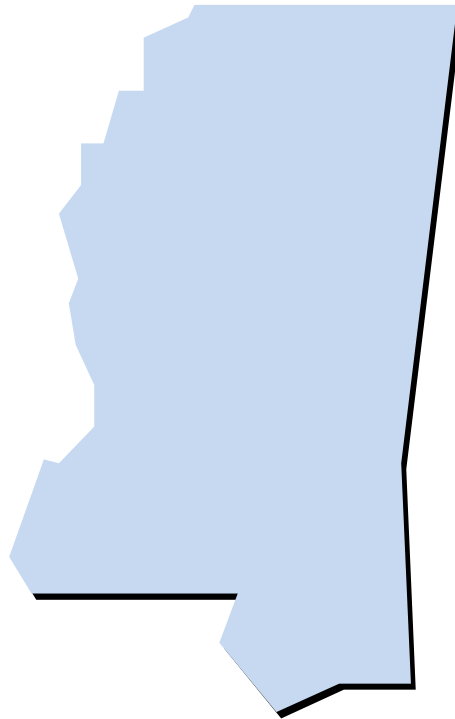


ANNUAL REPORT FOR MISSISSIPPI NURSING
DEGREE PROGRAMS

Nursing Education in
MISSISSIPPI



Janette S. McCrory, DNP, RN
Director of Nursing Education

May 21, 2015

Office of Academic and Student Affairs
Mississippi Institutions of Higher Learning

TABLE OF CONTENTS

Admissions by Academic Year	Page 3
Enrollment by Fall Term	Page 5
Graduate Program Enrollment by Clinical Practice Role	Page 7
Graduates by Academic Year	Page 8
Associate and Baccalaureate Graduates	Page 10
Masters and Doctoral Graduates	Page 11
NCLEX-RN® Pass Rates	Page 12
Student/Faculty Ratios	Page 13
Faculty Vacancies and Preparation by Institution	Page 14
Degree Completion Rates by Degree Level	Page 15
Nurse Practitioner Certification Rates	Page 17
National Accreditation Status and Schedule	Page 18

Admissions by Academic Year

College/University Nursing Program	2009 / 2010	2010 / 2011	2011 / 2012	2012 / 2013	2013 / 2014	5-Year Average	5-Year Change
Associate							
Alcorn State University	78	49	36	45	48	51	-38.5%
Coahoma Community College	18	44	36	36	25	32	38.9%
Copiah-Lincoln Community College	51	56	80	74	65	65	27.5%
East Central Community College	80	84	91	89	68	82	-15.0%
East Mississippi Community College	31	30	20	30	22	27	-29.0%
Hinds Community College	306	265	283	290	260	281	-15.0%
Holmes Community College	170	161	169	165	187	170	10.0%
Itawamba Community College	150	162	171	169	169	164	12.7%
Jones County Junior College	106	98	110	98	79	98	-25.5%
Meridian Community College	210	249	231	274	268	246	27.6%
Mississippi Delta Community College	96	93	95	79	79	88	-17.7%
Mississippi Gulf Coast Community College	265	244	190	318	329	269	24.2%
Mississippi University for Women	61	81	50	60	70	64	14.8%
Northeast Mississippi Community College	120	155	109	122	127	127	5.8%
Northwest Mississippi Community College	154	151	154	160	162	156	5.2%
Pearl River Community College	142	149	146	132	166	147	16.9%
Southwest Mississippi Community College	129	134	125	87	103	116	-20.2%
Subtotal	2167	2205	2096	2228	2227	2185	2.8%
Baccalaureate							
Alcorn State University	66	136	92	55	50	80	-24.2%
Belhaven University ¹	N/A	N/A	N/A	N/A	N/A	N/A	N/A
Delta State University	73	50	63	41	49	55	-32.9%
Mississippi College	79	93	78	81	80	82	1.3%
Mississippi University for Women	156	244	343	436	442	324	183.3%
University of Mississippi Medical Center	151	130	137	215	276	182	82.8%
University of Southern Mississippi	236	237	251	235	246	241	4.2%
William Carey University	98	142	153	124	136	131	38.8%
Subtotal	859	1032	1117	1187	1279	1095	48.9%
Masters							
Alcorn State University	22	26	35	26	35	29	59.1%
Delta State University	35	20	15	23	15	22	-57.1%
Mississippi University for Women	50	48	41	40	41	44	-18.0%
University of Mississippi Medical Center	74	83	109	96	155	103	109.5%
University of Southern Mississippi	82	51	48	62	61	61	-25.6%
William Carey University	38	32	78	84	51	57	34.2%
Subtotal	301	260	326	331	358	315	18.9%
Doctoral							
Delta State University ²	N/A	N/A	N/A	N/A	6	N/A	N/A
Mississippi University for Women ³	N/A	N/A	N/A	5	6	N/A	N/A
University of Mississippi Medical Center	11	12	9	19	12	13	9.1%
University of Southern Mississippi	15	9	17	31	33	21	120.0%
William Carey University ⁴	N/A	N/A	N/A	44	26	N/A	N/A
Subtotal	26	21	26	99	83	51	219.2%
TOTAL	3353	3518	3565	3845	3947	3646	17.7%

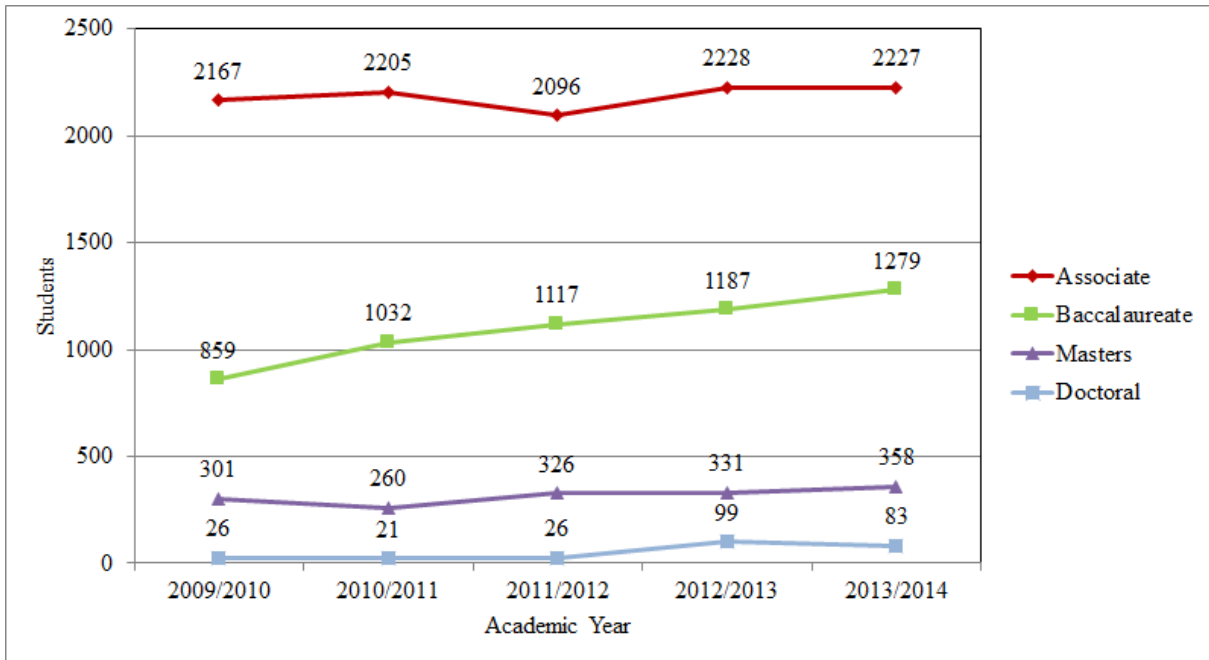
¹ Belhaven University – new program August 2014 with first graduating class May 2016

² DSU – new Doctor of Nursing Practice (DNP) program August 2013

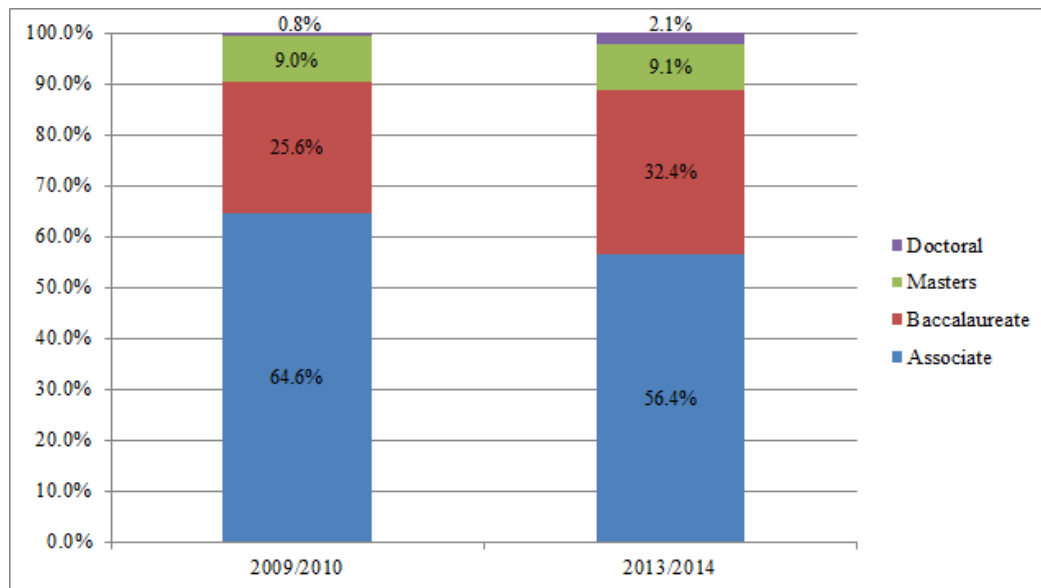
³ MUW – new Doctor of Nursing Practice (DNP) program January 2013

⁴ WCU – new PhD in Nursing Education and Administration program Fall 2012

Admissions by Academic Year



- The overall total number of nursing admissions has increased by 17.7 percent from AY2009-10 to AY2013-14. Most of this increase has been in the Baccalaureate (48.9%), Masters (18.9%), and Doctoral (219.2%) programs. Admissions to Associate programs have remained relatively stable with a 2.8 percent increase.



- Nursing admissions by academic level have changed slightly from AY2009-10 to AY2013-14. Higher percentages of admissions are at the baccalaureate and graduate levels.

Enrollment by Fall Term

College/University Nursing Program	2010	2011	2012	2013	2014	5-Year Average	5-Year Change
Associate							
Alcorn State University	85	100	66	78	59	78	-30.6%
Coahoma Community College	46	36	34	29	21	33	-54.3%
Copiah-Lincoln Community College	91	89	111	105	99	99	8.8%
East Central Community College	121	112	128	108	109	116	-9.9%
East Mississippi Community College	15	43	47	41	42	38	180.0%
Hinds Community College	511	447	490	472	476	479	-6.8%
Holmes Community College	280	277	298	278	202	267	-27.9%
Itawamba Community College	276	247	242	270	239	255	-13.4%
Jones County Junior College	148	146	160	139	148	148	0.0%
Meridian Community College	396	404	380	380	389	390	-1.8%
Mississippi Delta Community College	129	118	121	118	104	118	-19.4%
Mississippi Gulf Coast Community College	401	337	311	389	434	374	8.2%
Mississippi University for Women	105	93	96	96	99	98	-5.7%
Northeast Mississippi Community College	244	245	228	199	196	222	-19.7%
Northwest Mississippi Community College	223	261	283	257	242	253	8.5%
Pearl River Community College	241	258	238	254	239	246	-0.8%
Southwest Mississippi Community College	185	183	161	153	140	164	-24.3%
Subtotal	3497	3396	3394	3366	3238	3378	-7.4%
Baccalaureate							
Alcorn State University	106	127	86	78	80	95	-24.5%
Belhaven University ¹	N/A	N/A	N/A	N/A	18	N/A	N/A
Delta State University	115	127	99	95	141	115	22.6%
Mississippi College	154	152	145	144	159	151	3.2%
Mississippi University for Women	301	384	500	499	530	443	76.1%
University of Mississippi Medical Center	241	239	290	373	417	312	73.0%
University of Southern Mississippi	417	450	417	416	411	422	-1.4%
William Carey University	195	226	181	175	174	190	-10.8%
Subtotal	1529	1705	1718	1780	1930	1732	26.2%
Masters							
Alcorn State University	70	61	74	66	35	61	-50.0%
Delta State University	78	47	50	38	36	50	-53.8%
Mississippi University for Women	49	44	39	42	42	43	-14.3%
University of Mississippi Medical Center	143	170	202	288	355	232	148.3%
University of Southern Mississippi	122	112	105	113	111	113	-9.0%
William Carey University	37	46	47	84	83	59	124.3%
Subtotal	499	480	517	631	662	558	32.7%
Doctoral							
Delta State University ²	N/A	N/A	N/A	6	22	N/A	N/A
Mississippi University for Women ³	N/A	N/A	N/A	5	3	N/A	N/A
University of Mississippi Medical Center	27	33	43	42	57	40	111.1%
University of Southern Mississippi	28	45	37	60	77	49	175.0%
William Carey University ⁴	N/A	N/A	44	74	77	N/A	N/A
Subtotal	55	78	124	187	236	136	329.1%
TOTAL	5580	5659	5753	5964	6066	5804	8.7%

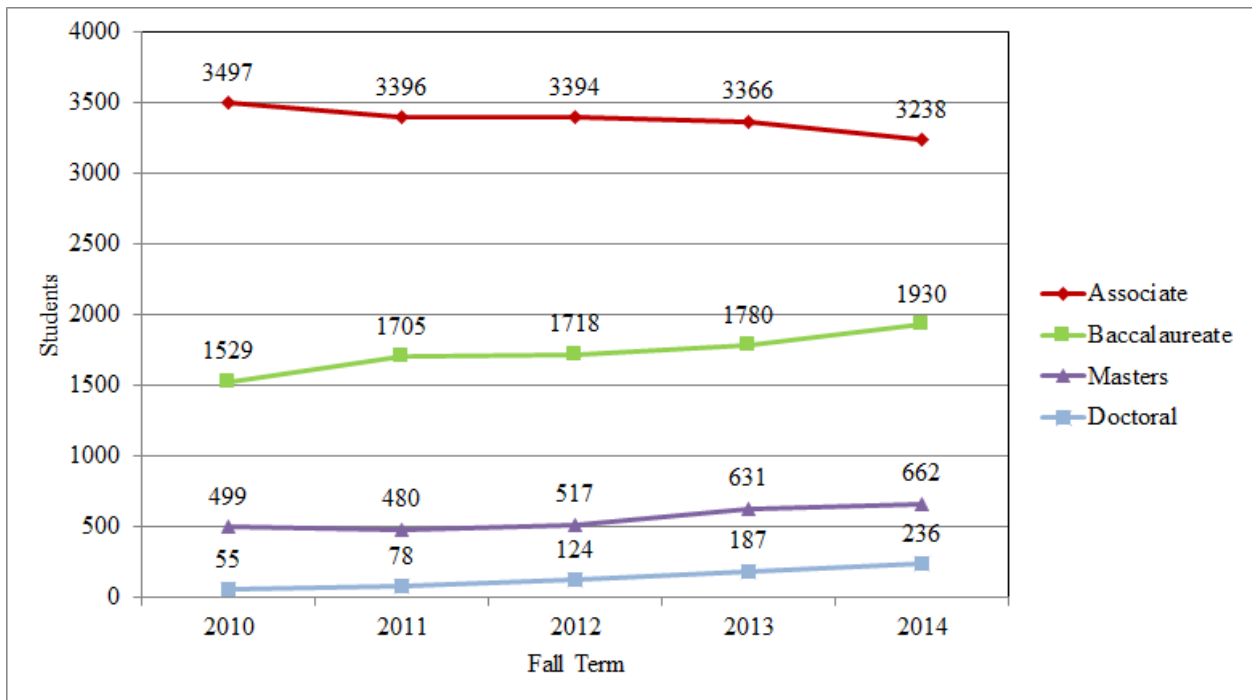
¹ Belhaven University – new program August 2014 with first graduating class May 2016

² DSU – new Doctor of Nursing Practice (DNP) program August 2013

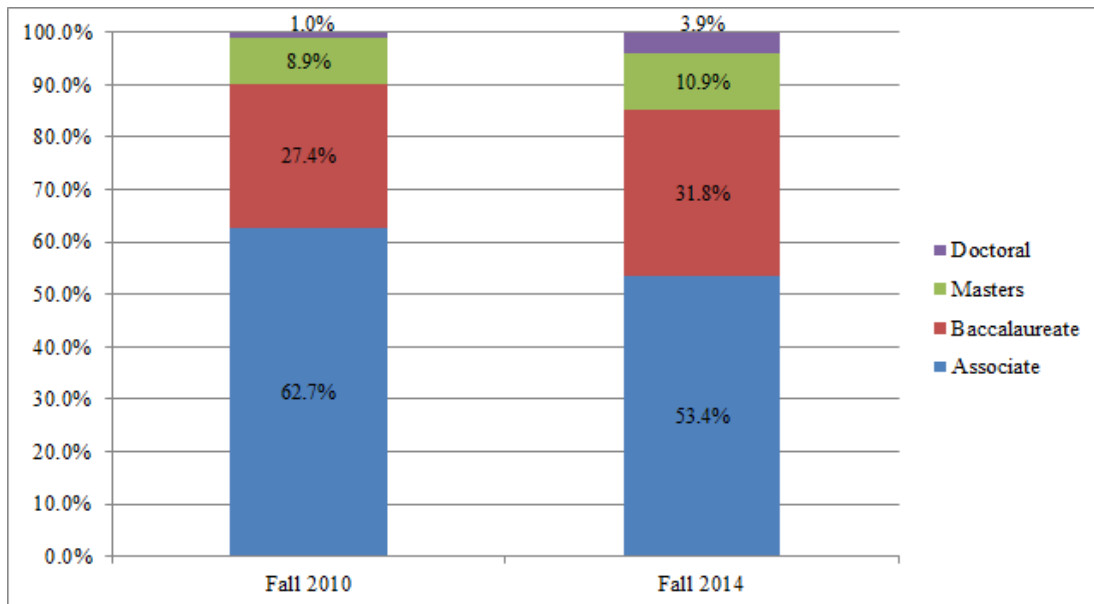
³ MUW – new Doctor of Nursing Practice (DNP) program January 2013

⁴ WCU – new PhD in Nursing Education and Administration program Fall 2012

Enrollment by Fall Term



- Nursing enrollment has increased by 8.7 percent from Fall 2010 to Fall 2014. Most of this increase has been in the Baccalaureate (26.2%), Masters (32.7%), and Doctoral (329.1%) programs. Enrollment in Associate programs has seen a 7.4 percent decrease.



- Nursing enrollment by academic level has changed slightly from Fall 2010 to Fall 2014. Higher percentages of students are enrolling at the baccalaureate and graduate levels.

Graduate Program Enrollment by Clinical Practice Role Fall 2014

Institution	Doctoral Enrollment			Masters Enrollment		Total Graduate Enrollment
	DNP	PhD	Other*	Role		
Alcorn State University				Education Family NP Post-Masters Family NP Family Psych MH NP	4 26 2 3	35
Delta State University ¹	22			Family NP Post-Masters Family NP Family Psych MH NP Other – Non-degree seeking	28 3 4 1	58
Mississippi University for Women ²	3			Family NP Post-Masters Family NP Family Psych MH NP Post-Masters Family Psych MH NP	38 2 1 1	45
University of Mississippi Medical Center	29	21	7	Administration Education Family NP Post-Masters Family NP Adult Geri NP Post-Masters Adult Geri NP Family Psych MH NP Post-Masters Family Psych MH NP Acute Care Adult Geri NP Post-Masters Acute Care Adult Other – Non-degree seeking	49 38 116 7 58 4 35 7 21 1 19	412
University of Southern Mississippi ³	55	22		Family NP Post-Masters Family NP Adult Geri NP Family Psych MH NP Post-Masters Family Psych MH NP	86 9 1 7 8	188
William Carey University ⁴		77		Education MSN/MBA Dual Degree	68 15	160
Total Graduate Enrollment Fall 2014	109	120	7		662	898
Total Graduate Enrollment Fall 2013	76	110	1		631	818
Total Graduate Enrollment Fall 2012	47	77			517	641
Total Graduate Enrollment Fall 2011	44	31	3		480	558
Total Graduate Enrollment Fall 2010	28	27			499	554

*Other – students with special circumstances or non-degree seeking

¹DSU – new Doctor of Nursing Practice (DNP) program August 2013

²MUW – new Doctor of Nursing Practice (DNP) program January 2013

³USM – DNP enrollment includes Nurse Anesthesia Program (Post-BSN to DNP)

⁴WCU – new MSN/MBA dual degree program Fall 2014

Graduates by Academic Year

College/University Nursing Program	2009 / 2010	2010 / 2011	2011 / 2012	2012 / 2013	2013 / 2014	5-Year Average	5-Year Change
Associate							
Alcorn State University	32	31	25	27	41	31	28.1%
Coahoma Community College	16	20	20	13	11	16	-31.3%
Copiah-Lincoln Community College	24	30	39	50	52	39	116.7%
East Central Community College	56	53	41	38	54	48	-3.6%
East Mississippi Community College ¹	N/A	N/A	13	28	14	18	N/A
Hinds Community College	179	200	166	207	219	194	22.3%
Holmes Community College	85	99	113	119	117	107	37.6%
Itawamba Community College	98	105	90	73	91	91	-7.1%
Jones County Junior College	60	57	48	61	52	56	-13.3%
Meridian Community College	179	201	153	158	162	171	-9.5%
Mississippi Delta Community College	58	54	48	51	49	52	-15.5%
Mississippi Gulf Coast Community College	116	176	168	85	105	130	-9.5%
Mississippi University for Women	52	54	48	47	42	49	-19.2%
Northeast Mississippi Community College	106	77	82	110	69	89	-34.9%
Northwest Mississippi Community College	82	89	99	119	103	98	25.6%
Pearl River Community College	69	97	103	96	89	91	29.0%
Southwest Mississippi Community College	69	77	57	84	69	71	0.0%
Subtotal	1281	1420	1313	1366	1339	1344	4.5%
Baccalaureate							
Alcorn State University	32	41	59	63	40	47	25.0%
Belhaven University ²	N/A	N/A	N/A	N/A	N/A	N/A	N/A
Delta State University	19	42	54	39	31	37	63.2%
Mississippi College	92	64	65	66	67	71	-27.2%
Mississippi University for Women	93	161	258	336	294	228	216.1%
University of Mississippi Medical Center	158	121	108	124	257	154	62.7%
University of Southern Mississippi	224	208	218	198	178	205	-20.5%
William Carey University	72	82	118	126	103	100	43.1%
Subtotal	690	719	880	952	970	842	40.6%
Masters							
Alcorn State University	9	17	27	25	22	20	144.4%
Delta State University	10	33	16	13	16	18	60.0%
Mississippi University for Women	44	47	40	40	39	42	-11.4%
University of Mississippi Medical Center	41	46	44	58	65	51	58.5%
University of Southern Mississippi	38	48	57	45	41	46	7.9%
William Carey University	7	18	25	31	51	26	628.6%
Subtotal	149	209	209	212	234	203	57.0%
Doctoral							
Delta State University ³	N/A	N/A	N/A	N/A	N/A	N/A	N/A
Mississippi University for Women ⁴	N/A	N/A	N/A	N/A	5	N/A	N/A
University of Mississippi Medical Center	1	1	5	9	7	5	600.0%
University of Southern Mississippi	1	2	7	10	7	5	600.0%
William Carey University ⁵	N/A	N/A	N/A	N/A	21	N/A	N/A
Subtotal	2	3	12	19	40	15	1900.0%
TOTAL	2122	2351	2414	2549	2583	2404	21.7%

¹EMCC - new program January 2010 with first graduating class December 2011

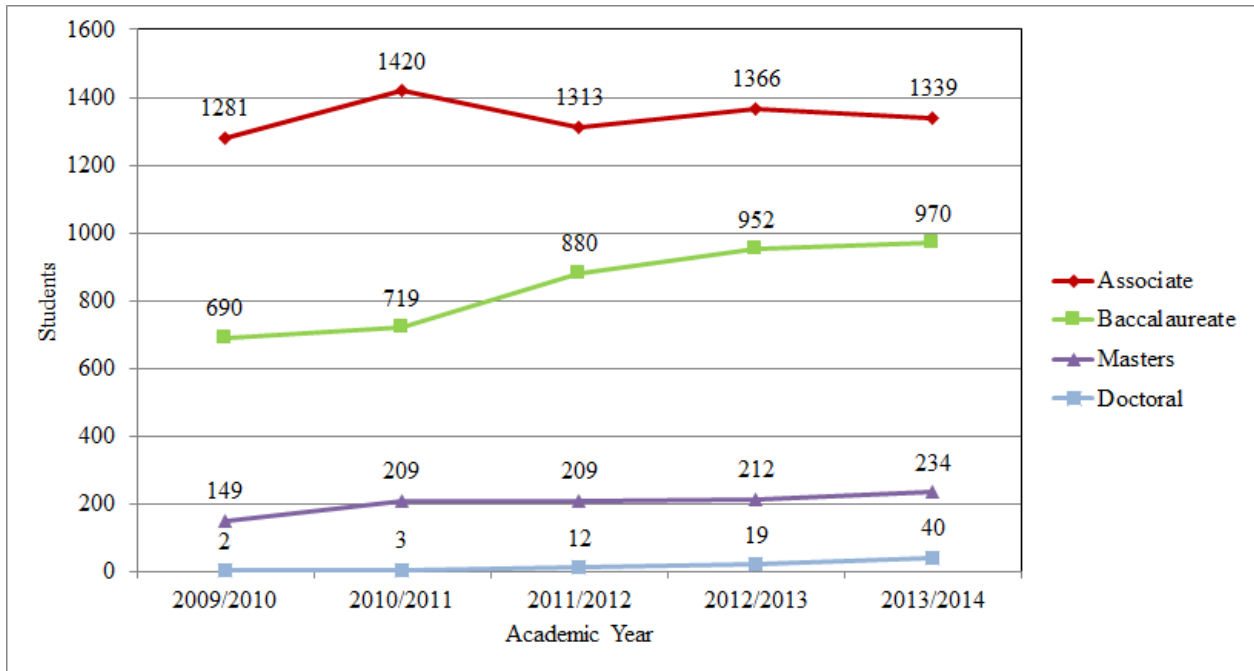
²Belhaven University – new program August 2014 with first graduating class May 2016

³DSU – new Doctor of Nursing Practice (DNP) program August 2013

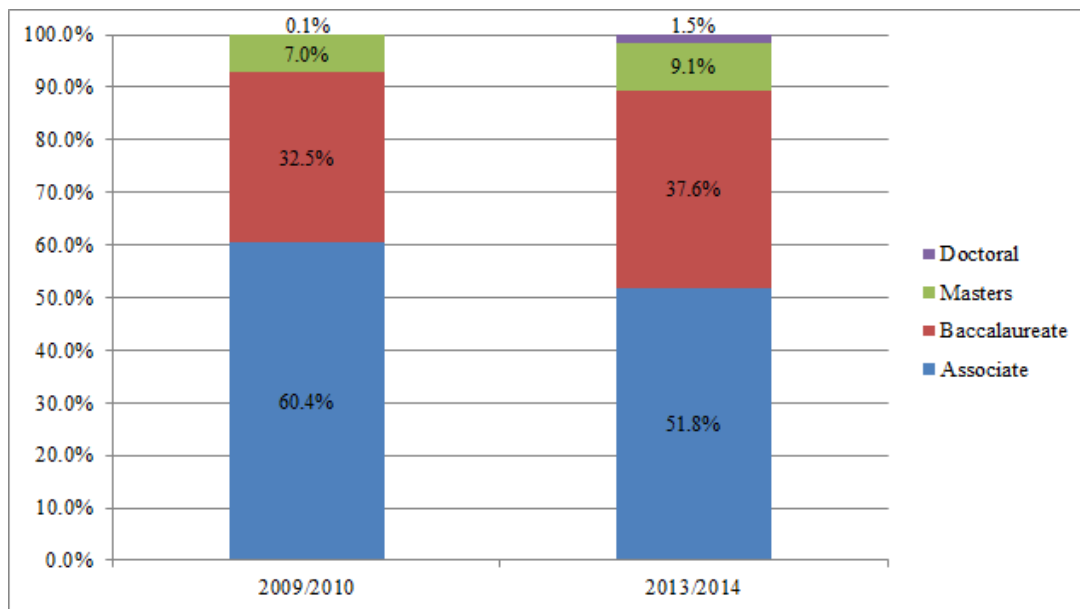
⁴MUW – new Doctor of Nursing Practice (DNP) program January 2013

⁵WCU – new PhD in Nursing Education and Administration program Fall 2012

Graduates by Academic Year



- Nursing graduates have increased by 21.7 percent from AY2009-10 to AY2013-14. Most of this increase has been in the baccalaureate (40.6%) and masters (57.0%) programs.



- Nursing graduates by academic level have changed slightly from AY2009-10 to AY2013-14. Higher percentages of students are graduating at the baccalaureate and graduate levels.

Associate and Baccalaureate Graduates Academic Year 2013-2014

Institution/Degree	Generic Graduates ¹	LPN to RN Graduates	Other RN Graduates ²	RN to BSN Graduates	Total Graduates
Associate Degree					
Alcorn State University	30	11			41
Coahoma Community College	7	4			11
Copiah-Lincoln Community College	39	13			52
East Central Community College	50	4			54
East Mississippi Community College	14				14
Hinds Community College	152	62	5		219
Holmes Community College	92	25			117
Itawamba Community College	89	2			91
Jones County Junior College	52				52
Meridian Community College	142	20			162
Mississippi Delta Community College	40	9			49
Mississippi Gulf Coast Community College	85	20			105
Mississippi University Women	23	19			42
Northeast Mississippi Community College	59	10			69
Northwest Mississippi Community College	102	1			103
Pearl River Community College	75	14			89
Southwest Mississippi Community College	49	20			69
Subtotal	1100	234	5		1339
Baccalaureate Degree					
Alcorn State University	27			13	40
Belhaven University ³	N/A			N/A	N/A
Delta State University	19			12	31
Mississippi College	63			4	67
Mississippi University for Women	58			236	294
University of Mississippi Medical Center	98		29	130	257
University of Southern Mississippi	145			33	178
William Carey University	57			46	103
Subtotal	467		29	474	970
TOTAL	1567	234	34	474	2309

¹Generic Graduates - Traditional track, pre-licensure students

²Other RN Graduates – Accelerated 2nd Degree BSN Program, Paramedic & Respiratory Therapist

³Belhaven University – new program August 2014 with first graduating class May 2016

Masters and Doctoral Graduates Academic Year 2013-2014

Institution	Doctoral Graduates		Masters Graduates		Total Graduates
	DNP	PhD	Role		
Alcorn State University			Education Family NP Post-Masters Family NP	7 14 1	22
Delta State University ¹			Family NP	16	16
Mississippi University for Women ²	5		Family NP Post-Masters Family NP Family Psych MH NP	37 1 1	44
University of Mississippi Medical Center	6	1	Administration Post-Masters Administration Education Family NP Post-Masters Family NP Acute Care Adult Geri NP Adult Geri NP Post-Masters Adult Geri NP	7 1 11 25 5 5 3 8	72
University of Southern Mississippi	5	2	Family NP Post-Masters Family NP Adult Geri NP	34 6 1	48
William Carey University ³		21	Education	51	72
Total Graduates AY 2013/2014	16	24		234	274
Total Graduates AY 2012/2013	13	6		212	231
Total Graduates AY 2011/2012	9	3		209	221
Total Graduates AY 2010/2011	0	3		209	212
Total Graduates AY 2009/2010	0	2		149	151

¹ DSU – new Doctor of Nursing Practice (DNP) program August 2013

² MUW – new Doctor of Nursing Practice (DNP) program January 2013

³ WCU – new PhD in Nursing Education and Administration program Fall 2012

**NCLEX-RN® Pass Rates for
Mississippi Undergraduate Nursing Programs
Calendar Years 2012-2014**

(Source: MS Board of Nursing/National Council of State Boards of Nursing)

STANDARD VI: Outcomes. 2. a. NCLEX Pass Rates: Annual NCLEX pass rates for all test takers (1st and repeat) will be at 80% or above over a three-year period.

Nursing Programs	2012	2013	2014	3-Year Pass Rate
Alcorn State University	82.60%	64.29%	52.27%	63.16%
Coahoma Community College	100%	100%	90.91%	97.73%
Copiah-Lincoln Community College	97.43%	92.00%	94.12%	94.29%
East Central Community College	97.56%	89.19%	81.82%	88.72%
East Mississippi Community College	100%	92.59%	92.86%	94.44%
Hinds Community College	98.82%	92.12%	87.91%	92.52%
Holmes Community College	99.07%	89.52%	92.85%	93.60%
Itawamba Community College	98.92%	93.06%	93.41%	95.31%
Jones County Junior College	100%	91.80%	100.00%	96.91%
Meridian Community College	95.62%	94.77%	92.78%	94.26%
Mississippi Delta Community College	97.91%	94.00%	96.00%	95.95%
Mississippi Gulf Coast Community College	97.88%	95.18%	98.17%	96.35%
Mississippi University for Women	95.83%	100%	93.02%	96.35%
Northeast Mississippi Community College	98.78%	95.41%	92.86%	95.79%
Northwest Mississippi Community College	100%	94.02%	88.68%	93.97%
Pearl River Community College	99.00%	93.55%	86.81%	93.33%
Southwest Mississippi Community College	98.24%	92.86%	92.75%	94.29%
Associate Degree Pass Rate	97.50%	92.02%	90.46%	93.55%
Alcorn State University	100%	85.19%	85.19%	89.61%
Belhaven University ¹	N/A	N/A	N/A	N/A
Delta State University	100%	100%	94.74%	98.77%
Mississippi College	100%	93.44%	92.73%	95.40%
Mississippi University for Women	100%	100%	100%	100.00%
University of Mississippi Medical Center	98.26%	96.83%	100%	98.36%
University of Southern Mississippi	97.68%	93.29%	95.89%	95.65%
William Carey University	96.00%	98.21%	94.64%	96.26%
Bachelor Degree Pass Rate	98.85%	95.28%	96.29%	96.65%
ADN and BSN Pass Rate Combined	98.17%	93.65%	91.99%	94.41%
National Pass Rate (1st Write Only)	90.34%	83.04%	81.78%	
National Pass Rate (Repeat)	55.63%	47.42%	46.36%	
TOTAL Mississippi Graduates taking NCLEX-RN®	1785	1866	1848	

¹Belhaven University – new program August 2014 with first graduating class May 2016

Student/Faculty Ratios Fall 2014

STANDARD IV. Curriculum. *Undergraduate student-to-faculty ratios must be no more than 15 to 1 for total enrollment, 10 to 1 for clinical laboratory courses that require direct supervision, and 15 to 1 for those that do not require direct supervision.*

Nursing Program	Student Enrollment	Total Faculty Number (FTE)	Student/Faculty Total Enrollment Ratio	Meets Student/Faculty Clinical Ratio*
Associate Degree				
Alcorn State University	59	4 (3.5)	15:1	Yes
Coahoma Community College	21	5 (4.5)	4:1	Yes
Copiah-Lincoln Community College	99	11 (11)	9:1	Yes
East Central Community College	109	12 (9.5)	9:1	Yes
East Mississippi Community College	42	6 (6)	7:1	Yes
Hinds Community College	476	60 (48.4)	8:1	Yes
Holmes Community College	202	32 (30.8)	6:1	Yes
Itawamba Community College	239	24 (20.4)	10:1	Yes
Jones County Junior College	148	16 (16)	9:1	Yes
Meridian Community College	389	38 (37)	10:1	Yes
Mississippi Delta Community College	104	11 (11)	8:1	Yes
Mississippi Gulf Coast Community College	434	47 (37.14)	9:1	Yes
Mississippi University for Women	99	11 (11)	8:1	Yes
Northeast Mississippi Community College	196	14 (14)	14:1	Yes
Northwest Mississippi Community College	242	24 (20.8)	10:1	Yes
Pearl River Community College	239	27 (21.4)	10:1	Yes
Southwest Mississippi Community College	140	14 (12.2)	10:1	Yes
Baccalaureate Degree				
Alcorn State University	80	8 (4.61)	10:1	Yes
Belhaven University	18	5 (5)	4:1	Yes
Delta State University	141	13 (10.47)	11:1	Yes
Mississippi College	159	21 (18.5)	8:1	Yes
Mississippi University for Women	530	44(27.35)	12:1	Yes
University of Mississippi Medical Center	417	43 (34.21)	10:1	Yes
University of Southern Mississippi	411	46 (30.28)	9:1	Yes
William Carey University	174	25 (17.60)	7:1	Yes
TOTAL	5168	561 (462.66)		

*Based on verification in the annual report submitted by Deans and Directors of Schools of Nursing

Faculty Vacancies and Preparation by Institution Fall 2014

Institution	Program Vacancy				Faculty Preparation				Total Faculty FTE
	ADN	BSN	MSN	DNP/PhD	BSN ¹	MSN	Doctorate	Other ²	
Alcorn State University	2	3.5				5.925	6.1		12.025
Belhaven University						5			5
Coahoma Community College						2.5	2		4.5
Copiah-Lincoln Community College						11			11
Delta State University						6.91	9		15.91
East Central Community College	1				.75	4.75	4		9.5
East Mississippi Community College						5	1		6
Hinds Community College	1				0.8	41.2	6.4		48.4
Holmes Community College	1					30.8			30.8
Itawamba Community College						15	5.4		20.4
Jones County Junior College					1	14	1		16
Meridian Community College						37	1		38
Mississippi College						15.20	3.3		18.50
Mississippi Delta Community College	1					10	1		11
Mississippi Gulf Coast Community College	4				.84	31.34	4.96		37.14
Mississippi University for Women						30.5	15.35		45.85
Northeast Mississippi Community College						14			14
Northwest Mississippi Community College						20.8			20.8
Pearl River Community College						20.4	1		21.4
Southwest Mississippi Community College						12.2			12.2
University of Mississippi Medical Center					.38	20.96	37.57	.15	59.06
University of Southern Mississippi		2	1	3		18.58	23.42		42
William Carey University		1		1		14.4	13.70		28.10
Total Fall 2014	10	6.5	1	4	3.77	387.47	136.2	0.15	527.59

Faculty preparation includes fulltime, part-time and adjunct.

¹BSN Faculty – approved faculty exception currently pursuing a master’s degree in nursing, with completion in 3 years

²Other (Non-Nurse Faculty) – MA Organizational Management & Development; PhD Biochemistry; PhD Biostatistics; PhD Clinical Health Sciences; PhD Counseling; PhD Geological Engineering; & PhD Epidemiology; & MD

Degree Completion Rates by Degree Level

STANDARD VI: Outcomes 2. b. Degree Completion Rates: *Expected levels of achievement for program completion are determined by the faculty and reflect program demographics, academic progression, program history, and best practice.*

College/University Nursing Program	Academic Year			ELA*	3-Year Rate
	2011/2012	2012/2013	2013/2014		
<i>Associate Degree</i>					
Alcorn State University ¹	80.00%	73.00%	73.00%	73.33%	75.00%
Coahoma Community College ²	64.00%	57.00%	50.00%	56.67%	57.89%
Copiah-Lincoln Community College	69.64%	66.67%	70.00%	55%	64.38%
East Central Community College	76.62%	57.14%	55.84%	60%	63.59%
East Mississippi Community College ³	54.50%	90.00%	80.00%	60%	N/A
Hinds Community College	72.58%	74.36%	72.70%	60%	72.83%
Holmes Community College	65.00%	76.00%	68.00%	60%	71.19%
Itawamba Community College	86.00%	70.60%	72.58%	60%	71.95%
Jones County Junior College	76.00%	87.00%	81.00%	60%	80.85%
Meridian Community College	84.00%	62.30%	53.00%	70%	63.51%
Mississippi Delta Community College	64.00%	61.00%	68.00%	60%	64.14%
Mississippi Gulf Coast Community College	72.72%	67.30%	68.00%	60%	68.70%
Mississippi University for Women	71.05%	64.70%	63.60%	60%	65.12%
Northeast Mississippi Community College	76.60%	78.60%	80.00%	60%	78.48%
Northwest Mississippi Community College	71.00%	79.05%	82.00%	65%	77.46%
Pearl River Community College	67.00%	76.00%	76.00%	60%	72.91%
Southwest Mississippi Community College	68.29%	70.00%	72.00%	60%	70.17%
<i>Baccalaureate</i>					
Alcorn State University ⁴	90.00%	78.40%	76.92%	73.33%	82.23%
Belhaven University ⁵	N/A	N/A	N/A	80%	N/A
Delta State University	90.00%	90.00%	89.47%	80%	89.58%
Mississippi College ⁶	89.40%	86.00%	86.00%	71.66%	86.91%
Mississippi University for Women	94.53%	94.15%	88.78%	75%	92.42%
University of Mississippi Medical Center	92.70%	95.30%	97.71%	85%	95.88%
University of Southern Mississippi	91.00%	99.00%	98.00%	75%	95.50%
William Carey University	84.70%	72.00%	92.00%	60%	81.46%
<i>Masters</i>					
Alcorn State University ⁷	96.00%	94.00%	100%	76.67%	97.33%
Delta State University	97.00%	100%	92.30%	80%	96.72%
Mississippi University for Women	100%	97.60%	100%	90%	99.15%
University of Mississippi Medical Center	89.10%	89.20%	89.02%	85%	89.15%
University of Southern Mississippi	90.00%	90.00%	98.00%	80%	92.26%
William Carey University	86.10%	93.90%	93.00%	90%	91.38%

*ELA – Expected levels of achievement

¹ASU – ADN average ELA for three-year period (ELA 80% for 2011/12; 70% for 2012/13 & 2013/14)

²CCC – ADN average ELA for three-year period (ELA 60% for 2011/12; 55% for 2012/13 & 2013/14)

³EMCC – new ADN program January 2010 with first graduating class December 2011; 2011/12 rate at 100% length of program

⁴ASU – BSN average ELA for three-year period (ELA 80% for 2011/12; 70% for 2012/13 & 2013/14)

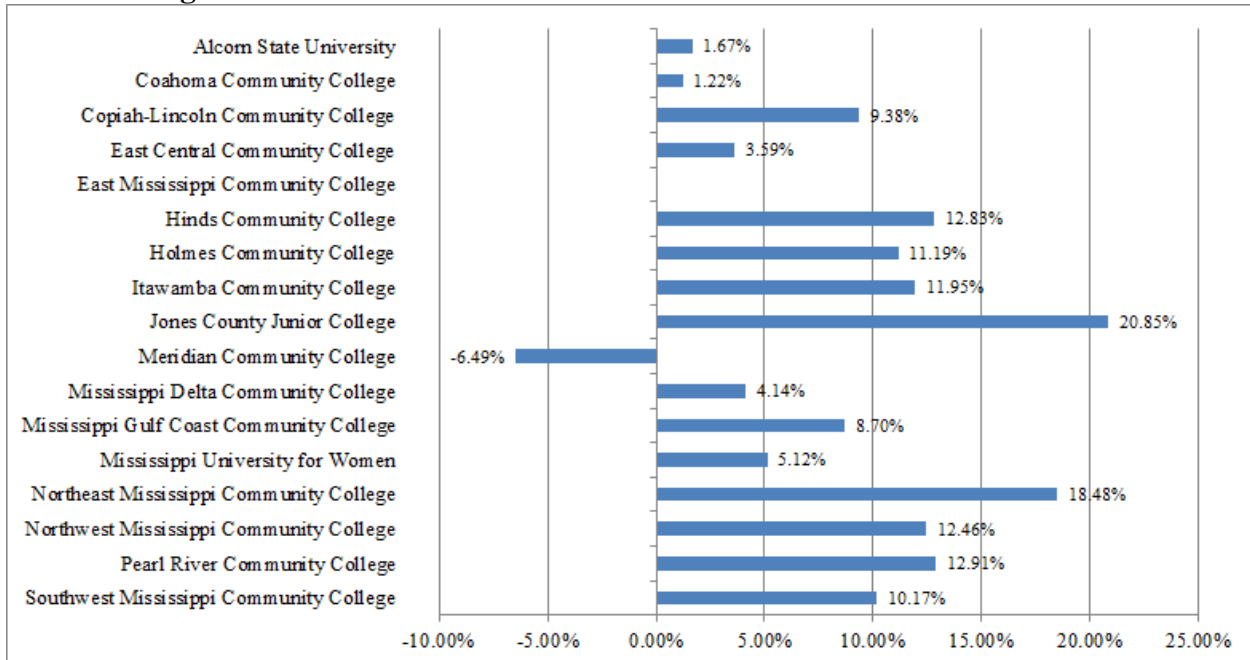
⁵Belhaven University – new BSN program August 2014 with first graduating class May 2016

⁶MC – BSN average ELA for three-year period (ELA 75% for 2011/12; 70% for 2012/13 & 2013/14)

⁷ASU – MSN average ELA for three-year period (ELA 80% for 2011/12 & 2012/13; 70% for 2013/14)

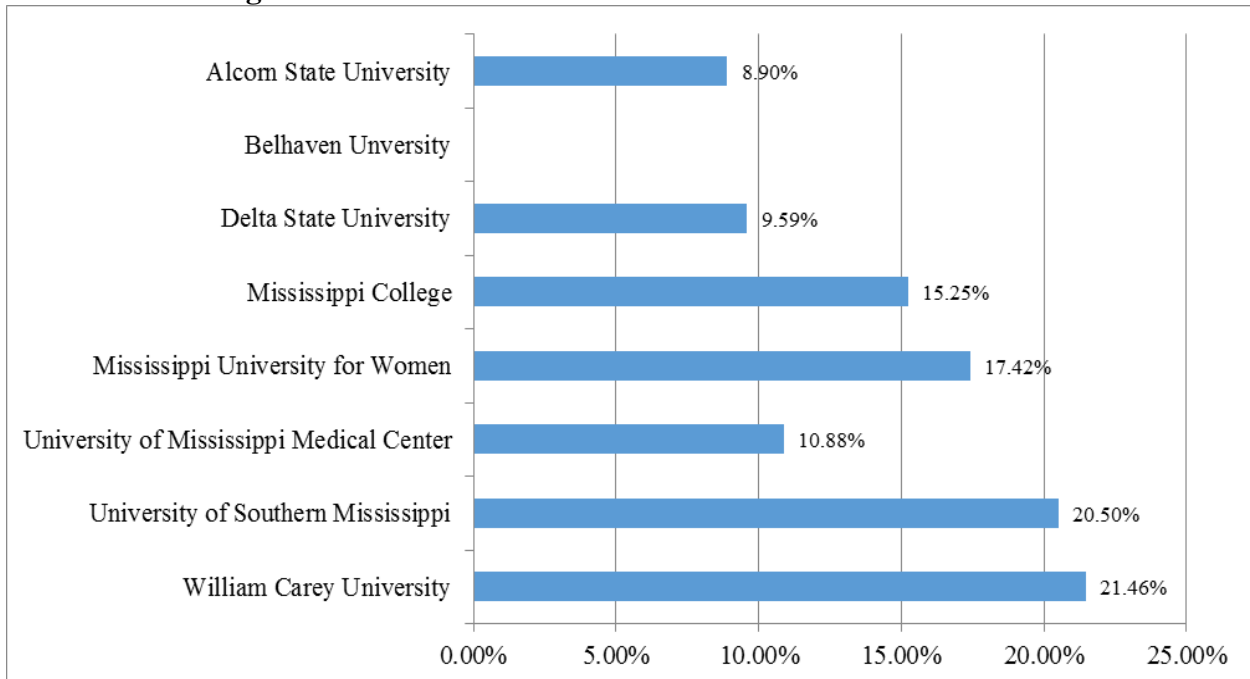
Degree Completion Rates Above or Below Expected Levels of Achievement (ELA)

Associate Degree



* EMCC – new program January 2010 with first graduating class December 2011.

Baccalaureate Degree

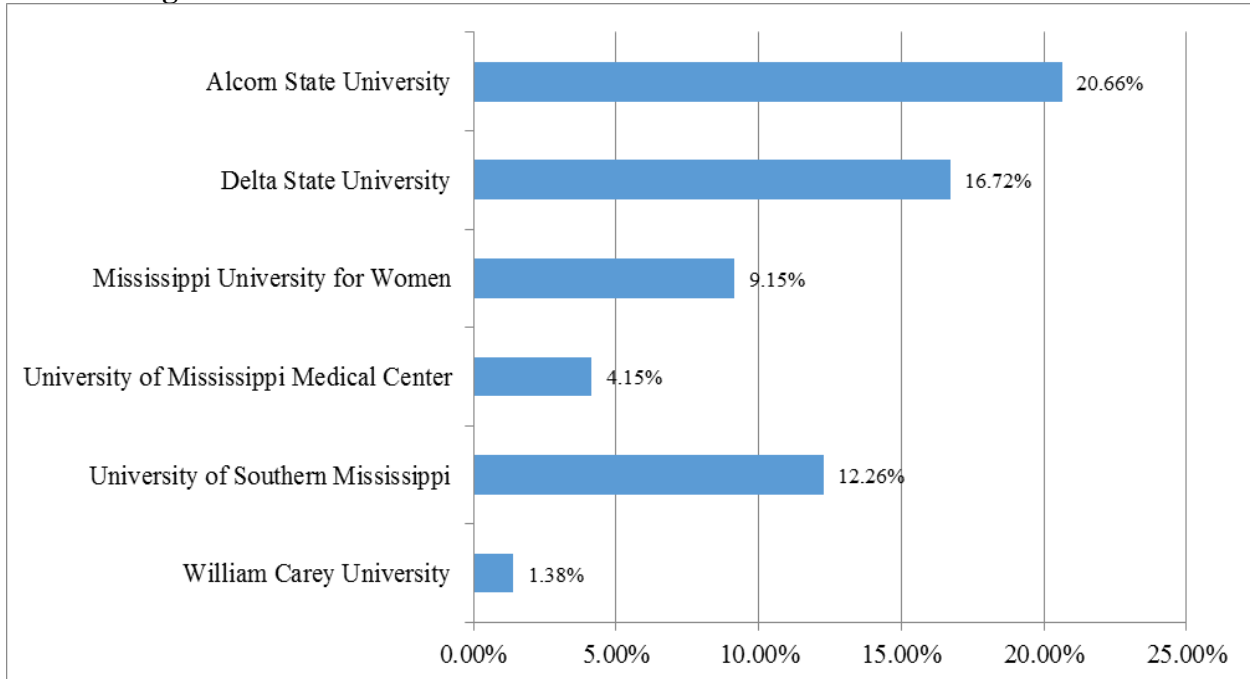


* Belhaven University – new program August 2014 with first graduating class May 2016

Note: Zero (0.0%) or positive values indicate three-year completion rates meet or exceed Expected Levels of Achievement (ELA) rates. Negative values indicate completion rates fell below ELA rates.

Degree Completion Rates Above or Below Expected Levels of Achievement (ELA)

Masters Degree



Note: Zero (0.0%) or positive values indicate three-year completion rates meet or exceed Expected Levels of Achievement (ELA) rates. Negative values indicate completion rates fell below ELA rates.

Nurse Practitioner Certification Rates Calendar Years 2011-2013

STANDARD VI: Outcomes 2. c. Certification Pass Rates: *Annual certification exam pass rates for all test takers (1st and repeat) will be at 80% or above over a three-year period.*

College/University Nursing Program	2011	2012	2013	3-Year Rate
Alcorn State University	100%	100%	87.00%	94.23%
Delta State University	100%	100%	100%	100%
Mississippi University for Women	95.00%	100%	92.00%	95.83%
University of Mississippi Medical Center	100%	95.00%	100%	97.92%
University of Southern Mississippi	100%	100%	88.00%	99.01%

National Accreditation Status and Site Visit Schedule

III. STANDARDS FOR ACCREDITATION. *All Nursing Education Programs must be accredited by a national nursing education accrediting body.*

Nursing Program	Accreditation Status		Date of Next Accreditation Visit
	ACEN*	CCNE**	
Associate Degree			
Alcorn State University	Continuing Accreditation		Spring 2015
Coahoma Community College	Initial Accreditation		Fall 2019
Copiah-Lincoln Community College	Continuing Accreditation		Spring 2018
East Central Community College	Continuing Accreditation		Fall 2018
East Mississippi Community College	Initial Accreditation		Fall 2016
Hinds Community College	Continuing Accreditation		Fall 2018
Holmes Community College	Continuing Accreditation		Spring 2019
Itawamba Community College	Continuing Accreditation		Spring 2020
Jones County Junior College	Continuing Accreditation		Fall 2018
Meridian Community College	Continuing Accreditation		Spring 2018
Mississippi Delta Community College	Continuing Accreditation With Conditions		Fall 2015 (Report)
Mississippi Gulf Coast Community College	Continuing Accreditation		Spring 2022
Mississippi University for Women	Continuing Accreditation		Fall 2021
Northeast Mississippi Community College	Continuing Accreditation		Spring 2015
Northwest Mississippi Community College	Continuing Accreditation		Fall 2018
Pearl River Community College	Continuing Accreditation		Spring 2019
Southwest Mississippi Community College	Continuing Accreditation		Spring 2020
Baccalaureate/Higher Degree			
Alcorn State University	Continuing Accreditation (BSN) Continuing Accreditation With Conditions (MSN)		Fall 2015 BSN Spring 2015 MSN (Report)
Belhaven University		Candidacy Status Initial Site Visit	Spring 2016
Delta State University		Continuing Accreditation Initial Site Visit	Fall 2020 BSN/MSN Spring 2015 DNP
Mississippi College		Continuing Accreditation	Spring 2022 BSN
Mississippi University for Women		Continuing Accreditation Initial Site Visit	Spring 2020 BSN/MSN Fall 2015 - DNP
University of Mississippi Medical Center		Continuing Accreditation Initial Accreditation	Spring 2022 BSN/MSN Spring 2017 DNP
University of Southern Mississippi ¹		Continuing Accreditation Initial Accreditation	Spring 2022 BSN/MSN Spring 2017 DNP & NAP
William Carey University		Continuing Accreditation	Spring 2022 BSN/MSN
Mississippi Education Consortium for Specialized Advanced Practice Nursing (MECSAPN: ASU, DSU, MUW, UMMC, & USM)		Initial Accreditation Gerontological NP & Psych/Mental Health NP	Spring 2016

*ACEN – Accreditation Commission for Education in Nursing

**CCNE – Commission on Collegiate Nursing Education

¹USM – Spring 2012 Initial Accreditation by the Council on Accreditation (COA) of Nurse Anesthesia Educational Programs. Next NAP visit Spring 2017.