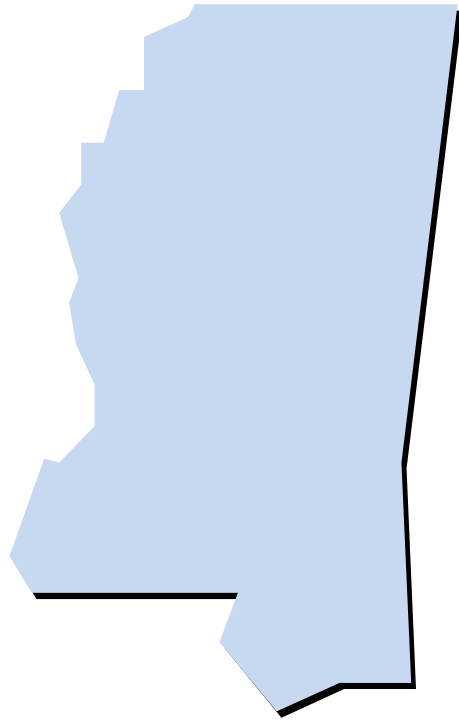


ANNUAL REPORT FOR MISSISSIPPI NURSING  
DEGREE PROGRAMS

*Nursing Education in*  
**MISSISSIPPI**



Janette S. McCrory, DNP, RN  
Director of Nursing Education

May 15, 2014

Office of Academic and Student Affairs  
Mississippi Institutions of Higher Learning

## TABLE OF CONTENTS

---

Admissions by Academic Year	Page 3
Enrollment by Fall Term	Page 5
Graduate Program Enrollment by Clinical Practice Role	Page 7
Graduates by Academic Year	Page 8
Associate and Baccalaureate Graduates	Page 10
Masters and Doctoral Graduates	Page 11
NCLEX-RN® Pass Rates	Page 12
Student/Faculty Ratios	Page 13
Faculty Vacancies and Preparation by Institution	Page 14
Degree Completion Rates by Degree Level	Page 15
Nurse Practitioner Certification Rates	Page 17
National Accreditation Status and Schedule	Page 18

## Admissions by Academic Year

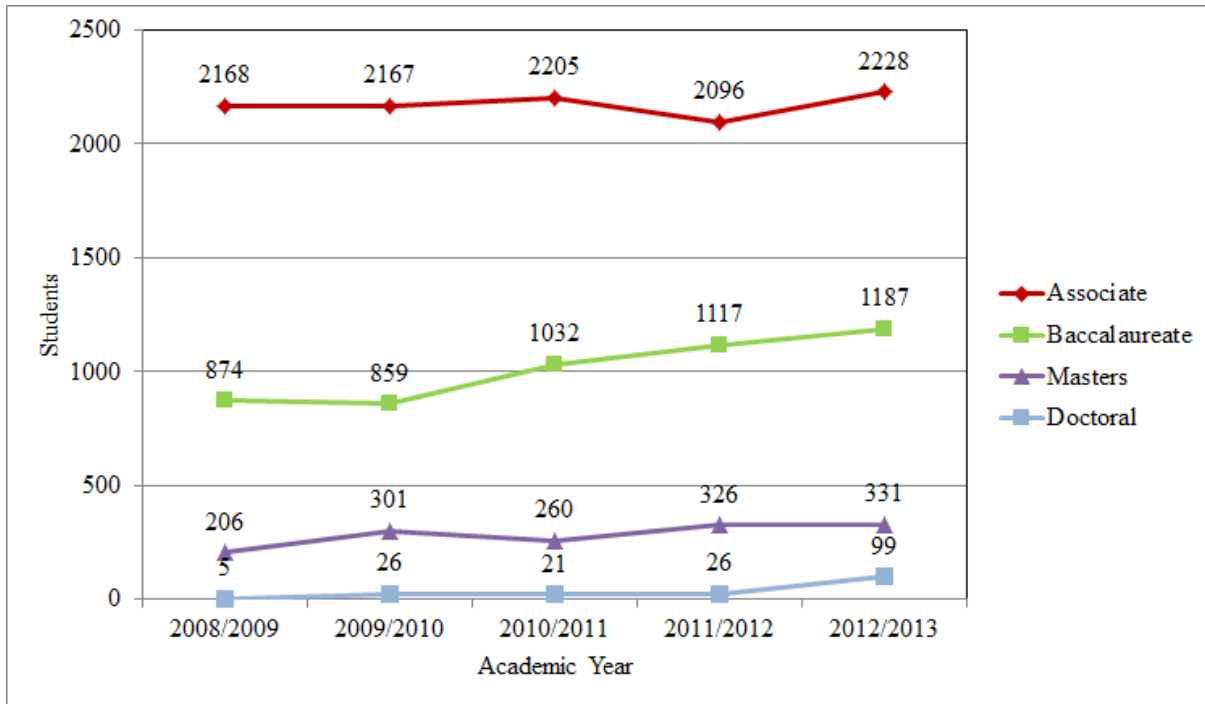
College/University Nursing Program	2008 / 2009	2009 / 2010	2010 / 2011	2011 / 2012	2012 / 2013	5-Year Average
<b>Associate</b>						
Alcorn State University	51	78	49	36	45	52
Coahoma Community College	25	18	44	36	36	32
Copiah-Lincoln Community College	58	51	56	80	74	64
East Central Community College	102	80	84	91	89	89
East Mississippi Community College <sup>1</sup>	N/A	31	30	20	30	N/A
Hinds Community College	300	306	265	283	290	289
Holmes Community College	178	170	161	169	165	169
Itawamba Community College	163	150	162	171	169	163
Jones County Junior College	111	106	98	110	98	105
Meridian Community College	239	210	249	231	274	241
Mississippi Delta Community College	86	96	93	95	79	90
Mississippi Gulf Coast Community College	269	265	244	190	318	257
Mississippi University for Women	68	61	81	50	60	64
Northeast Mississippi Community College	140	120	155	109	122	129
Northwest Mississippi Community College	156	154	151	154	160	155
Pearl River Community College	151	142	149	146	132	144
Southwest Mississippi Community College	71	129	134	125	87	109
<b>Subtotal</b>	<b>2168</b>	<b>2167</b>	<b>2205</b>	<b>2096</b>	<b>2228</b>	<b>2173</b>
<b>Baccalaureate</b>						
Alcorn State University	33	66	136	92	55	76
Delta State University	46	73	50	63	41	55
Mississippi College	99	79	93	78	81	86
Mississippi University for Women	154	156	244	343	436	267
University of Mississippi Medical Center	159	151	130	137	215	158
University of Southern Mississippi	268	236	237	251	235	245
William Carey University	115	98	142	153	124	126
<b>Subtotal</b>	<b>874</b>	<b>859</b>	<b>1032</b>	<b>1117</b>	<b>1187</b>	<b>1014</b>
<b>Masters</b>						
Alcorn State University	37	22	26	35	26	29
Delta State University	19	35	20	15	23	22
Mississippi University for Women	45	50	48	41	40	45
University of Mississippi Medical Center	49	74	83	109	96	82
University of Southern Mississippi	22	82	51	48	62	53
William Carey University	34	38	32	78	84	53
<b>Subtotal</b>	<b>206</b>	<b>301</b>	<b>260</b>	<b>326</b>	<b>331</b>	<b>285</b>
<b>Doctoral</b>						
Mississippi University for Women <sup>2</sup>	N/A	N/A	N/A	N/A	5	N/A
University of Mississippi Medical Center	1	11	12	9	19	10
University of Southern Mississippi	4	15	9	17	31	15
William Carey University <sup>3</sup>	N/A	N/A	N/A	N/A	44	N/A
<b>Subtotal</b>	<b>5</b>	<b>26</b>	<b>21</b>	<b>26</b>	<b>99</b>	<b>35</b>
<b>TOTAL</b>	<b>3253</b>	<b>3353</b>	<b>3518</b>	<b>3565</b>	<b>3845</b>	<b>3507</b>

<sup>1</sup> EMCC – new program January 2010 with first graduating class December 2011.

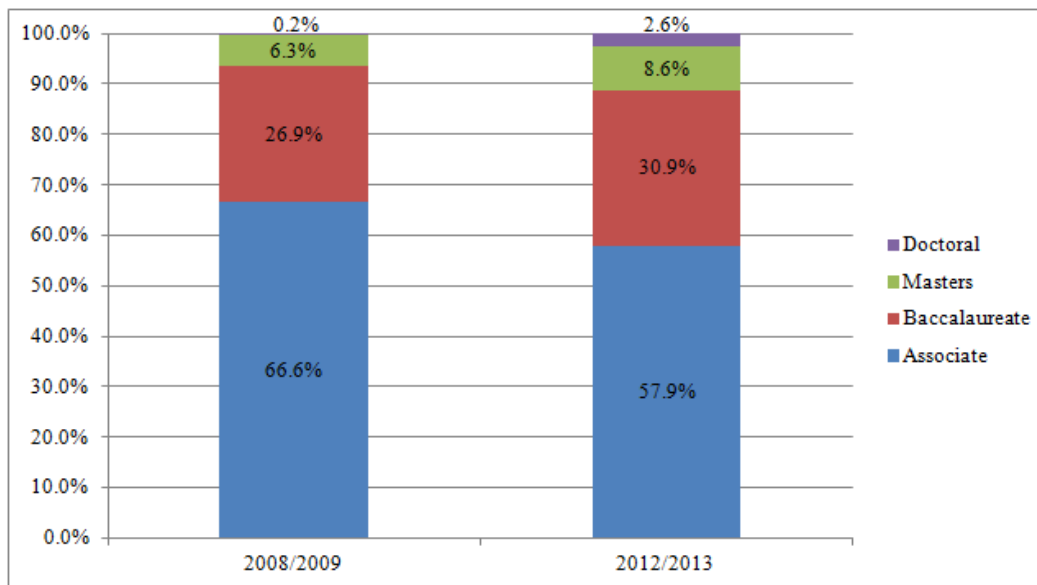
<sup>2</sup> MUW – new Doctor of Nursing Practice (DNP) program January 2013.

<sup>3</sup> WCU – new PhD in Nursing Education and Administration program Fall 2012.

## Admissions by Academic Year



- The overall total number of nursing admissions has increased by 18.2 percent from AY2008-09 to AY2012-13. Most of this increase has been in the Baccalaureate (35.8%), Masters (60.7%), and Doctoral (1,880.0%) programs. Admissions to Associate programs have remained relatively stable with a 2.8 percent increase.



- Nursing admissions by academic level have changed slightly from AY2008-09 to AY2012-13. Higher percentages of admissions are at the baccalaureate and graduate levels.

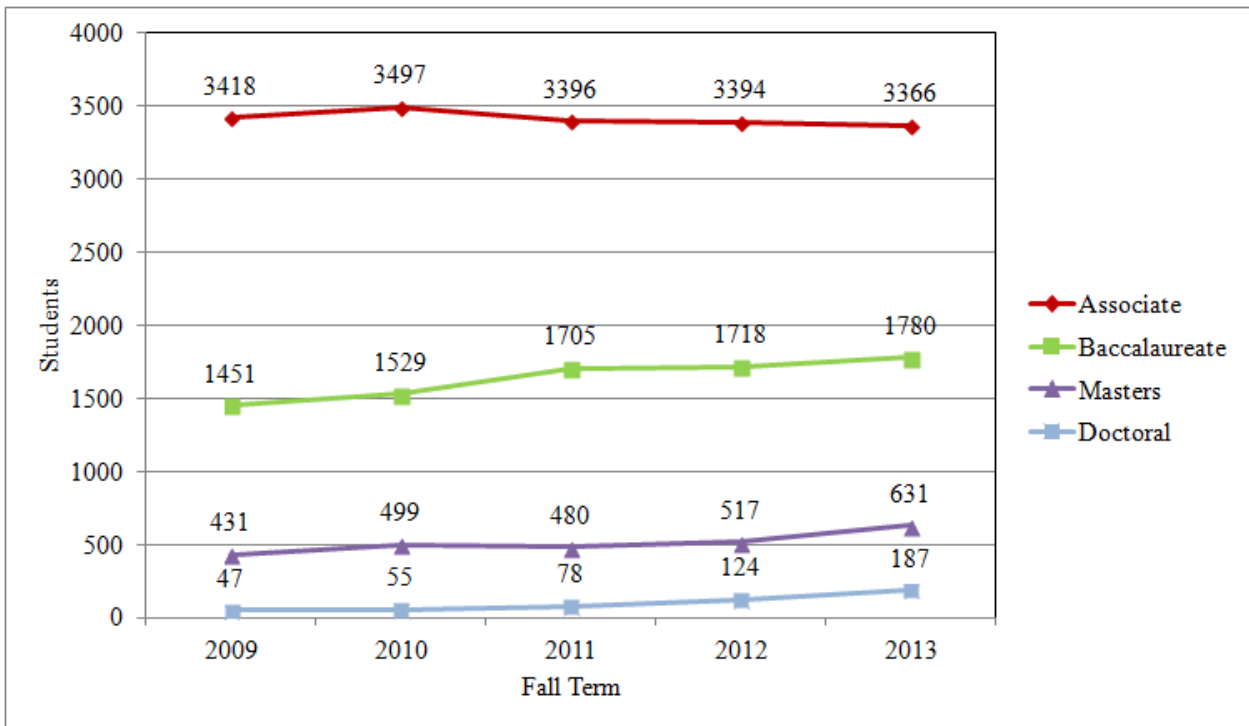
## Enrollment by Fall Term

College/University Nursing Program	2009	2010	2011	2012	2013	5-Year Average
<b>Associate</b>						
Alcorn State University	111	85	100	66	78	88
Coahoma Community College	23	46	36	34	29	34
Copiah-Lincoln Community College	85	91	89	111	105	96
East Central Community College	144	121	112	128	108	123
East Mississippi Community College <sup>1</sup>	N/A	15	43	47	41	N/A
Hinds Community College	497	511	447	490	472	483
Holmes Community College	232	280	277	298	278	273
Itawamba Community College	273	276	247	242	270	262
Jones County Junior College	160	148	146	160	139	151
Meridian Community College	393	396	404	380	380	391
Mississippi Delta Community College	134	129	118	121	118	124
Mississippi Gulf Coast Community College	402	401	337	311	389	368
Mississippi University for Women	109	105	93	96	96	100
Northeast Mississippi Community College	252	244	245	228	199	234
Northwest Mississippi Community College	208	223	261	283	257	246
Pearl River Community College	221	241	258	238	254	242
Southwest Mississippi Community College	174	185	183	161	153	171
<b>Subtotal</b>	<b>3418</b>	<b>3497</b>	<b>3396</b>	<b>3394</b>	<b>3366</b>	<b>3414</b>
<b>Baccalaureate</b>						
Alcorn State University	84	106	127	86	78	96
Delta State University	105	115	127	99	95	108
Mississippi College	145	154	152	145	144	148
Mississippi University for Women	204	301	384	500	499	378
University of Mississippi Medical Center	271	241	239	290	373	283
University of Southern Mississippi	427	417	450	417	416	425
William Carey University	215	195	226	181	175	198
<b>Subtotal</b>	<b>1451</b>	<b>1529</b>	<b>1705</b>	<b>1718</b>	<b>1780</b>	<b>1637</b>
<b>Masters</b>						
Alcorn State University	65	70	61	74	66	67
Delta State University	58	78	47	50	38	54
Mississippi University for Women	48	49	44	39	42	44
University of Mississippi Medical Center	129	143	170	202	288	186
University of Southern Mississippi	85	122	112	105	113	107
William Carey University	46	37	46	47	84	52
<b>Subtotal</b>	<b>431</b>	<b>499</b>	<b>480</b>	<b>517</b>	<b>631</b>	<b>512</b>
<b>Doctoral</b>						
Delta State University <sup>2</sup>	N/A	N/A	N/A	N/A	6	N/A
Mississippi University for Women <sup>3</sup>	N/A	N/A	N/A	N/A	5	N/A
University of Mississippi Medical Center	21	27	33	43	42	33
University of Southern Mississippi	26	28	45	37	60	39
William Carey University <sup>4</sup>	N/A	N/A	N/A	44	74	N/A
<b>Subtotal</b>	<b>47</b>	<b>55</b>	<b>78</b>	<b>124</b>	<b>187</b>	<b>98</b>
<b>TOTAL</b>	<b>5347</b>	<b>5580</b>	<b>5659</b>	<b>5753</b>	<b>5964</b>	<b>5661</b>

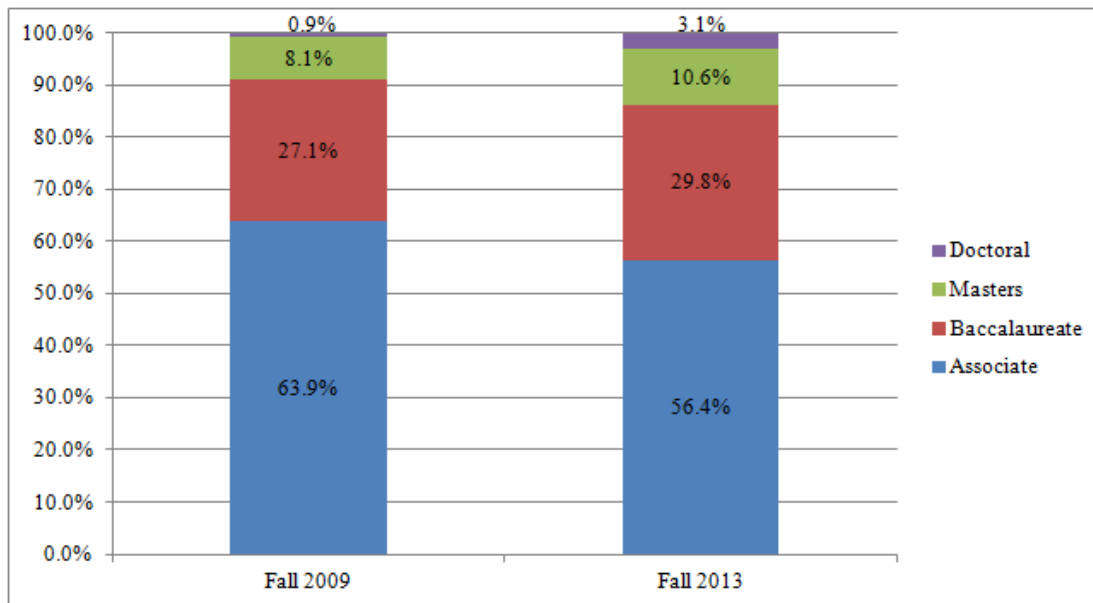
<sup>1</sup>EMCC - new ADN program January 2010. <sup>2</sup>DSU & <sup>3</sup>MUW – new DNP programs 2013.

<sup>4</sup>WCU – new PhD in Nursing Education and Administration program 2012.

## Enrollment by Fall Term



- Nursing enrollment has increased by 11.5 percent from Fall 2009 to Fall 2013. Most of this increase has been in the Baccalaureate (22.7%), Masters (46.4%), and Doctoral (297.9%) programs. Enrollment in Associate programs has remained relatively stable with a 1.5 percent decrease.



- Nursing enrollment by academic level has changed slightly from Fall 2009 to Fall 2013. Higher percentages of students are enrolling at the baccalaureate and graduate levels.

## Graduate Program Enrollment by Clinical Practice Role Fall 2013

Institution	Doctoral Enrollment			Masters Enrollment		Total Graduate Enrollment
	DNP	PhD	Other*	Role		
Alcorn State University				Education	17	<b>66</b>
				Family NP	41	
				Post-Masters Family NP	7	
				Family Psych MH NP	1	
Delta State University <sup>1</sup>	6			Family NP	28	<b>44</b>
				Post-Masters Family NP	2	
				Family Psych MH NP	2	
				Other – Non-degree seeking	6	
Mississippi University for Women <sup>2</sup>	5			Family NP	40	<b>47</b>
				Post-Masters Family NP	1	
				Family Psych MH NP	1	
University of Mississippi Medical Center	26	15	1	Administration	27	<b>330</b>
				Post-Masters Administration	1	
				Education	33	
				Family NP	121	
				Post-Masters Family NP	9	
				Adult Geri NP	19	
				Post-Masters Adult Geri NP	2	
				Family Psych MH NP	19	
				Post-Masters Family Psych MH NP	1	
				Acute Care Adult Geri NP	25	
				Post-Masters Acute Care Adult	1	
				Other – Non-degree seeking	30	
University of Southern Mississippi	39	21		Family NP	85	<b>173</b>
				Post-Masters Family NP	9	
				Adult Geri NP	3	
				Post-Masters Adult Geri NP	2	
				Family Psych MH NP	9	
				Post-Masters Family Psych MH NP	5	
William Carey University		74		Education	84	<b>158</b>
<b>Total Graduate Enrollment Fall 2013</b>	<b>76</b>	<b>110</b>	<b>1</b>		<b>631</b>	<b>818</b>
<b>Total Graduate Enrollment Fall 2012</b>	<b>47</b>	<b>77</b>			<b>517</b>	<b>641</b>
<b>Total Graduate Enrollment Fall 2011</b>	<b>44</b>	<b>31</b>	<b>3</b>		<b>480</b>	<b>558</b>
<b>Total Graduate Enrollment Fall 2010</b>	<b>28</b>	<b>27</b>			<b>499</b>	<b>554</b>
<b>Total Graduate Enrollment Fall 2009</b>	<b>18</b>	<b>29</b>			<b>431</b>	<b>478</b>

\*Other – students with special circumstances or non-degree seeking.

<sup>1</sup>DSU – new DNP program Fall 2013.

<sup>2</sup>MUW – new DNP program Spring 2013.

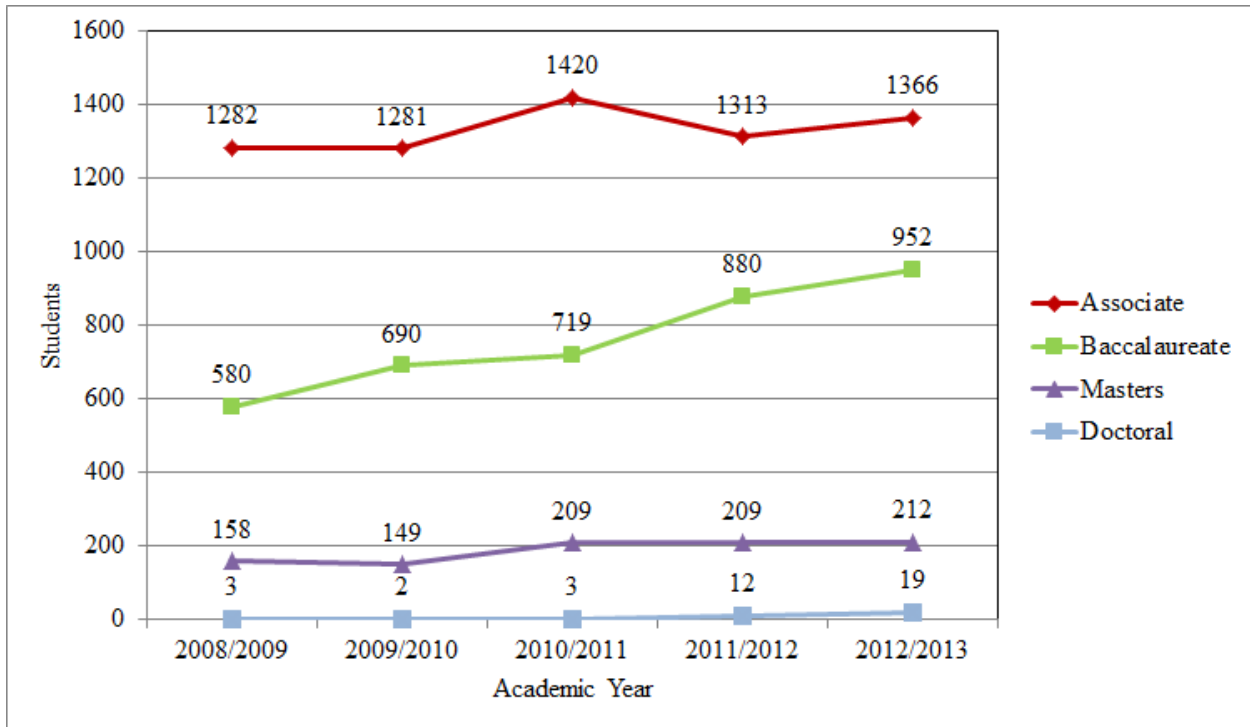
## Graduates by Academic Year

College/University Nursing Program	2008 / 2009	2009 / 2010	2010 / 2011	2011 / 2012	2012 / 2013	5-Year Average
<b>Associate</b>						
Alcorn State University	26	32	31	25	27	28
Coahoma Community College	14	16	20	20	13	17
Copiah-Lincoln Community College	35	24	30	39	50	36
East Central Community College	42	56	53	41	38	46
East Mississippi Community College <sup>1</sup>	N/A	N/A	N/A	13	28	N/A
Hinds Community College	216	179	200	166	207	194
Holmes Community College	79	85	99	113	119	99
Itawamba Community College	109	98	105	90	73	95
Jones County Junior College	55	60	57	48	61	56
Meridian Community College	167	179	201	153	158	172
Mississippi Delta Community College	47	58	54	48	51	52
Mississippi Gulf Coast Community College	108	116	176	168	85	131
Mississippi University for Women	33	52	54	48	47	47
Northeast Mississippi Community College	94	106	77	82	110	94
Northwest Mississippi Community College	94	82	89	99	119	97
Pearl River Community College	96	69	97	103	96	92
Southwest Mississippi Community College	67	69	77	57	84	71
<b>Subtotal</b>	<b>1282</b>	<b>1281</b>	<b>1420</b>	<b>1313</b>	<b>1366</b>	<b>1332</b>
<b>Baccalaureate</b>						
Alcorn State University	54	32	41	59	63	50
Delta State University	38	19	42	54	39	38
Mississippi College	59	92	64	65	66	69
Mississippi University for Women	86	93	161	258	336	187
University of Mississippi Medical Center	135	158	121	108	124	129
University of Southern Mississippi	168	224	208	218	198	203
William Carey University	40	72	82	118	126	88
<b>Subtotal</b>	<b>580</b>	<b>690</b>	<b>719</b>	<b>880</b>	<b>952</b>	<b>764</b>
<b>Masters</b>						
Alcorn State University	14	9	17	27	25	18
Delta State University	33	10	33	16	13	21
Mississippi University for Women	38	44	47	40	40	42
University of Mississippi Medical Center	36	41	46	44	58	45
University of Southern Mississippi	26	38	48	57	45	43
William Carey University	11	7	18	25	31	18
<b>Subtotal</b>	<b>158</b>	<b>149</b>	<b>209</b>	<b>209</b>	<b>212</b>	<b>187</b>
<b>Doctoral</b>						
University of Mississippi Medical Center	1	1	1	5	9	3
University of Southern Mississippi	2	1	2	7	10	4
<b>Subtotal</b>	<b>3</b>	<b>2</b>	<b>3</b>	<b>12</b>	<b>19</b>	<b>8</b>
<b>TOTAL</b>	<b>2023</b>	<b>2122</b>	<b>2351</b>	<b>2414</b>	<b>2549</b>	<b>2292</b>

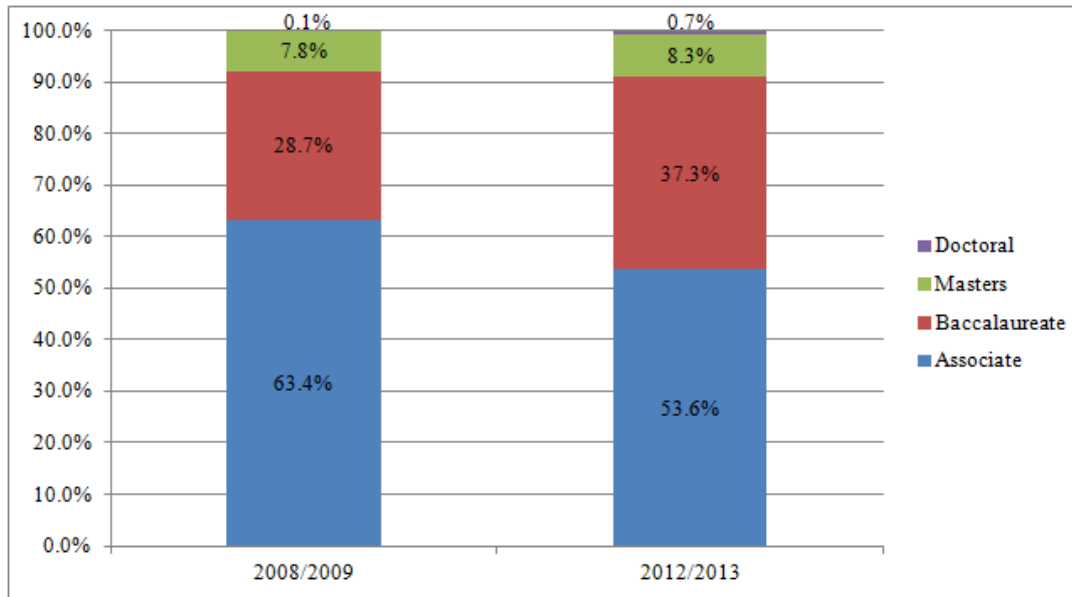
<sup>1</sup>EMCC - new program January 2010 with first graduating class December 2011.



## Graduates by Academic Year



- Nursing graduates have increased by 26.0 percent from AY2008-09 to AY2012-13. Most of this increase has been in the baccalaureate (64.1%) and masters (34.2%) programs.



- Nursing graduates by academic level have changed slightly from AY2008-09 to AY2012-13. Higher percentages of students are graduating at the baccalaureate and graduate levels.

## Associate and Baccalaureate Graduates Academic Year 2012-2013

Institution/Degree	Generic Graduates*	LPN to RN Graduates	Other RN Graduates**	RN to BSN Graduates	Total Graduates
<b>Associate Degree</b>					
Alcorn State University	18	9			27
Coahoma Community College	3	10			13
Copiah-Lincoln Community College	37	13			50
East Central Community College	31	7			38
East Mississippi Community College	28				28
Hinds Community College	144	60	3		207
Holmes Community College	79	40			119
Itawamba Community College	70	3			73
Jones County Junior College	61				61
Meridian Community College	127	29	2		158
Mississippi Delta Community College	42	9			51
Mississippi Gulf Coast Community College	78	7			85
Mississippi University Women	35	12			47
Northeast Mississippi Community College	100	10			110
Northwest Mississippi Community College	107	12			119
Pearl River Community College	96				96
Southwest Mississippi Community College	75	9			84
<b>Subtotal</b>	<b>1131</b>	<b>230</b>	<b>5</b>		<b>1366</b>
<b>Baccalaureate Degree</b>					
Alcorn State University	27			36	63
Delta State University	28			11	39
Mississippi College	62			4	66
Mississippi University for Women	54			282	336
University of Mississippi Medical Center	97		27		124
University of Southern Mississippi	162			36	198
William Carey University	80			46	126
<b>Subtotal</b>	<b>510</b>		<b>27</b>	<b>415</b>	<b>952</b>
<b>TOTAL</b>	<b>1641</b>	<b>230</b>	<b>32</b>	<b>415</b>	<b>2318</b>

\*Generic - Traditional track, pre-licensure students.

\*\*Other RN Graduates – Accelerated 2<sup>nd</sup> Degree Program, Paramedic & Respiratory Therapist.

**Masters and Doctoral Graduates  
Academic Year 2012-2013**

Institution	Doctoral Graduates		Masters Graduates	Total Graduates
	DNP	PhD	Role	
Alcorn State University			Education Family NP Post-Masters Family NP	5 18 2 <b>25</b>
Delta State University			Family NP Post-Masters Family NP	10 3 <b>13</b>
Mississippi University for Women			Family NP Post-Masters Family NP Adult Geri NP	38 1 1 <b>40</b>
University of Mississippi Medical Center	6	3	Administration Education Family NP Post-Masters Family NP Acute Care Adult Geri NP Post-Masters Acute Care Adult Geri NP	11 10 27 3 6 1 <b>67</b>
University of Southern Mississippi	7	3	Administration Family NP Post-Masters Family NP Adult Geri NP	6 34 1 4 <b>55</b>
William Carey University			Education	31 <b>31</b>
<b>Total Graduates AY 2012/2013</b>	<b>13</b>	<b>6</b>		<b>212</b> <b>231</b>
<b>Total Graduates AY 2011/2012</b>	<b>9</b>	<b>3</b>		<b>209</b> <b>221</b>
<b>Total Graduates AY 2010/2011</b>	<b>0</b>	<b>3</b>		<b>209</b> <b>212</b>
<b>Total Graduates AY 2009/2010</b>	<b>0</b>	<b>2</b>		<b>149</b> <b>151</b>
<b>Total Graduates AY 2008/2009</b>	N/A	<b>3</b>		<b>158</b> <b>161</b>

**NCLEX-RN® Pass Rates for  
Mississippi Undergraduate Nursing Programs  
Calendar Years 2011-2013**

(Source: MS Board of Nursing/National Council of State Boards of Nursing)

**STANDARD VI: Outcomes. 2. a. NCLEX Pass Rates: Annual NCLEX pass rates for all test takers (1<sup>st</sup> and repeat) will be at 80% or above over a three-year period.**

Nursing Programs	2011	2012	2013	3-Year Pass Rate <sup>2</sup>	3-Year Mean
Alcorn State University	88.88%	82.60%	64.29%	<b>78.21%</b>	<b>78.59%</b>
Coahoma Community College	90.00%	100%	100%	<b>96.23%</b>	<b>96.67%</b>
Copiah-Lincoln Community College	96.66%	97.43%	92.00%	<b>94.96%</b>	<b>95.36%</b>
East Central Community College	94.33%	97.56%	89.19%	<b>93.89%</b>	<b>93.69%</b>
East Mississippi Community College <sup>1</sup>	N/A	100%	92.59%	N/A	N/A
Hinds Community College	93.81%	98.82%	92.12%	<b>92.95%</b>	<b>94.92%</b>
Holmes Community College	98.36%	99.07%	89.52%	<b>95.48%</b>	<b>95.65%</b>
Itawamba Community College	90.00%	98.92%	93.06%	<b>93.82%</b>	<b>93.99%</b>
Jones County Junior College	96.42%	100%	91.80%	<b>95.78%</b>	<b>96.07%</b>
Meridian Community College	96.85%	95.62%	94.77%	<b>95.84%</b>	<b>95.75%</b>
Mississippi Delta Community College	100%	97.91%	94.00%	<b>97.33%</b>	<b>97.30%</b>
Mississippi Gulf Coast Community College	94.73%	97.88%	95.18%	<b>95.14%</b>	<b>95.92%</b>
Mississippi University for Women	94.44%	95.83%	100%	<b>96.62%</b>	<b>96.74%</b>
Northeast Mississippi Community College	98.71%	98.78%	95.41%	<b>97.40%</b>	<b>97.63%</b>
Northwest Mississippi Community College	98.95%	100%	94.02%	<b>97.38%</b>	<b>97.64%</b>
Pearl River Community College	96.84%	99.00%	93.55%	<b>96.54%</b>	<b>96.45%</b>
Southwest Mississippi Community College	94.80%	98.24%	92.86%	<b>94.95%</b>	<b>95.30%</b>
<b>Associate Degree Pass Rate</b>	<b>95.24%</b>	<b>97.50%</b>	<b>92.02%</b>	<b>95.07%</b>	<b>94.92%</b>
Alcorn State University	93.33%	100%	85.19%	<b>92.31%</b>	<b>92.84%</b>
Delta State University	100%	100%	100%	<b>100.00%</b>	<b>100%</b>
Mississippi College	98.28%	100%	93.44%	<b>97.18%</b>	<b>97.24%</b>
Mississippi University for Women	100%	100%	100%	<b>100.00%</b>	<b>100%</b>
University of Mississippi Medical Center	98.33%	98.26%	96.83%	<b>97.78%</b>	<b>97.80%</b>
University of Southern Mississippi	97.87%	97.68%	93.29%	<b>96.23%</b>	<b>96.28%</b>
William Carey University	91.93%	96.00%	98.21%	<b>95.34%</b>	<b>95.38%</b>
<b>Bachelor Degree Pass Rate</b>	<b>97.11%</b>	<b>98.85%</b>	<b>95.28%</b>	<b>97.03%</b>	<b>97.08%</b>
<b>ADN and BSN Pass Rate Combined</b>	<b>96.17%</b>	<b>98.17%</b>	<b>93.65%</b>	<b>95.60%</b>	<b>96.00%</b>
<b>National Pass Rate (1<sup>st</sup> Write Only)</b>	<b>87.89%</b>	<b>90.34%</b>	<b>83.04%</b>		
<b>National Pass Rate (Repeat)</b>	<b>55.78%</b>	<b>55.63%</b>	<b>47.42%</b>		
<b>TOTAL Mississippi Graduates taking NCLEX-RN®</b>	<b>1903</b>	<b>1785</b>	<b>1866</b>		

<sup>1</sup>EMCC – new program January 2010 with first graduating class December 2011.

<sup>2</sup>The 3-year pass rate has been added to provide a more comprehensive measure of NCLEX success.

## Student/Faculty Ratios Fall 2013

**STANDARD IV. Curriculum.** *Undergraduate student-to-faculty ratios must be no more than 15 to 1 for total enrollment, 10 to 1 for clinical laboratory courses that require direct supervision, and 15 to 1 for those that do not require direct supervision.*

Nursing Program	Student Enrollment	Total Faculty Number (FTE)	Student/Faculty Total Enrollment Ratio	Meets Student/Faculty Clinical Ratio*
<i>Associate Degree</i>				
Alcorn State University	78	6 (6)	13:1	Yes
Coahoma Community College	29	5 (4.2)	6:1	Yes
Copiah-Lincoln Community College	105	11 (11)	10:1	Yes
East Central Community College	108	12 (9.5)	9:1	Yes
East Mississippi Community College	41	6 (6)	7:1	Yes
Hinds Community College	472	61 (48.1)	8:1	Yes
Holmes Community College	278	35 (33)	8:1	Yes
Itawamba Community College	270	24 (20.4)	11:1	Yes
Jones County Junior College	139	16 (15.44)	9:1	Yes
Meridian Community College	380	35 (34)	11:1	Yes
Mississippi Delta Community College	118	15 (14)	8:1	Yes
Mississippi Gulf Coast Community College	389	46 (36.5)	8:1	Yes
Mississippi University for Women	96	12 (10.5)	8:1	Yes
Northeast Mississippi Community College	199	14 (14)	14:1	Yes
Northwest Mississippi Community College	257	25 (22.5)	10:1	Yes
Pearl River Community College	254	26 (23)	10:1	Yes
Southwest Mississippi Community College	153	15 (14.1)	10:2	Yes
<i>Baccalaureate Degree</i>				
Alcorn State University	78	7 (6.5)	11:1	Yes
Delta State University	95	12 (9.19)	8:1	Yes
Mississippi College	144	21 (18.25)	7:1	Yes
Mississippi University for Women	499	40 (25.06)	12:1	Yes
University of Mississippi Medical Center	373	43 (34.46)	9:1	Yes
University of Southern Mississippi	416	42 (30.99)	10:1	Yes
William Carey University	175	26 (19.04)	7:1	Yes
<b>TOTAL</b>	<b>5146</b>	<b>555 (465.2)</b>		

\*Based on verification in the annual report submitted by Deans and Directors of Schools of Nursing.

## Faculty Vacancies and Preparation by Institution Fall 2013

Institution	Program Vacancy				Faculty Preparation				Total Faculty FTE
	ADN	BSN	MSN	DNP/PhD	BSN*	MSN	Doctorate	Other**	
Alcorn State University						12	4.2		16.2
Coahoma Community College						4.2			4.2
Copiah-Lincoln Community College						11			11
Delta State University					1	5.49	8.75		15.24
East Central Community College					0.25	7.25	2		9.5
East Mississippi Community College*						4	2		6
Hinds Community College	2					42.8	5.3		48.1
Holmes Community College	1				2.8	30.2			33
Itawamba Community College						15	5.4		20.4
Jones County Junior College					.44	13	2		15.44
Meridian Community College					1	33			34
Mississippi College						14	4.25		18.25
Mississippi Delta Community College						14			14
Mississippi Gulf Coast Community College	6				1.6	31.2	3.7		36.5
Mississippi University for Women	1					30.32	12.74		43.06
Northeast Mississippi Community College						13	1		14
Northwest Mississippi Community College					.5	20	2		22.5
Pearl River Community College						22.6	0.4		23
Southwest Mississippi Community College						14.1			14.1
University of Mississippi Medical Center						20.01	31.67	1.45	55.13
University of Southern Mississippi		3	1	2		19.84	23.1		42.94
William Carey University					.04	17	11.4		28.44
<b>Total Fall 2013</b>	<b>10</b>	<b>3</b>	<b>1</b>	<b>2</b>	<b>7.63</b>	<b>394.01</b>	<b>119.91</b>	<b>1.45</b>	<b>523</b>

Faculty preparation includes fulltime, part-time, and adjunct.

\*BSN Faculty – approved faculty exception currently pursuing a master’s degree in nursing, with completion in 3 years.

\*\* Other (Non-Nurse Faculty) – MA Organizational Management & Development; MBA; PhD Biochemistry; PhD Biology; PhD Biostatistics; PhD Clinical Health Sciences; PhD Counseling; PhD Exercise Physiology; & PhD Instructional Systems & Workforce Development.

## Degree Completion Rates by Degree Level

**STANDARD VI: Outcomes 2. b. Degree Completion Rates: *Expected levels of achievement for program completion are determined by the faculty and reflect program demographics, academic progression, program history, and best practice.***

College/University Nursing Program	Academic Year			ELA*	3-Year Median <sup>9</sup>
	2010/2011	2011/2012	2012/2013		
<b>Associate Degree</b>					
Alcorn State University <sup>1</sup>	96.00%	80.00%	73.00%	76.67%	<b>80.00%</b>
Coahoma Community College <sup>2</sup>	65.00%	64.00%	57.00%	58.33%	<b>64.00%</b>
Copiah-Lincoln Community College <sup>3</sup>	59.00%	69.64%	66.67%	56.67%	<b>66.67%</b>
East Central Community College	60.00%	76.62%	57.14%	60%	<b>60.00%</b>
East Mississippi Community College <sup>4</sup>	N/A	54.50%	90.00%	60%	<b>N/A</b>
Hinds Community College	66.78%	72.58%	74.36%	60%	<b>72.58%</b>
Holmes Community College	66.40%	65.00%	76.00%	60%	<b>66.40%</b>
Itawamba Community College	70.50%	86.00%	70.60%	60%	<b>70.60%</b>
Jones County Junior College	60.24%	76.00%	87.00%	60%	<b>76.00%</b>
Meridian Community College	76.00%	84.00%	62.30%	70%	<b>76.00%</b>
Mississippi Delta Community College	67.00%	64.00%	61.00%	60%	<b>64.00%</b>
Mississippi Gulf Coast Community College	69.33%	72.72%	67.30%	60%	<b>69.33%</b>
Mississippi University for Women	77.77%	71.05%	64.70%	60%	<b>71.05%</b>
Northeast Mississippi Community College <sup>5</sup>	72.00%	76.60%	78.60%	63.33%	<b>76.60%</b>
Northwest Mississippi Community College <sup>6</sup>	71.00%	71.00%	79.05%	68.33%	<b>71.00%</b>
Pearl River Community College	64.00%	67.00%	76.00%	60%	<b>67.00%</b>
Southwest Mississippi Community College	61.59%	68.29%	70.00%	60%	<b>68.29%</b>
<b>Baccalaureate</b>					
Alcorn State University <sup>7</sup>	95.00%	90.00%	78.40%	76.67%	<b>90.00%</b>
Delta State University	100%	90.00%	90.00%	80%	<b>90.00%</b>
Mississippi College <sup>8</sup>	84.70%	89.40%	86.00%	73.33%	<b>86.00%</b>
Mississippi University for Women	89.88%	94.53%	94.15%	75%	<b>94.15%</b>
University of Mississippi Medical Center	96.20%	92.70%	95.30%	85%	<b>95.30%</b>
University of Southern Mississippi	94.00%	91.00%	99.00%	75%	<b>94.00%</b>
William Carey University	71.00%	84.70%	72.00%	60%	<b>72.00%</b>
<b>Masters</b>					
Alcorn State University	85.00%	96.00%	94.00%	80%	<b>94.00%</b>
Delta State University	100%	97.00%	100%	80%	<b>100.00%</b>
Mississippi University for Women	90.00%	100%	97.60%	90%	<b>97.60%</b>
University of Mississippi Medical Center	85.70%	89.10%	89.20%	85%	<b>89.10%</b>
University of Southern Mississippi	92.00%	90.00%	90.00%	80%	<b>90.00%</b>
William Carey University	94.40%	86.10%	93.90%	90%	<b>93.90%</b>

\*ELA – Expected levels of achievement.

<sup>1</sup>ASU – ADN average ELA for three-year period (ELA 80% for 2010/11 & 2011/12; 70% for 2012/13).

<sup>2</sup>CCC – ADN average ELA for three-year period (ELA 60% for 2010/11 & 2011/12; 55% for 2012/13).

<sup>3</sup>CLCC – ADN average ELA for three-year period (ELA 60% for 2010/11; 55% for 2011/12 & 2012/13).

<sup>4</sup>EMCC – new ADN program January 2010 with first graduating class December 2011.

<sup>5</sup>NEMCC - ADN average ELA for three-year period (ELA 70% for 2010/11; 60% for 2011/12 & 2012/13).

<sup>6</sup>NWMCC - ADN average ELA for three-year period (ELA 75% for 2010/11; 65% for 2011/12 & 2012/13).

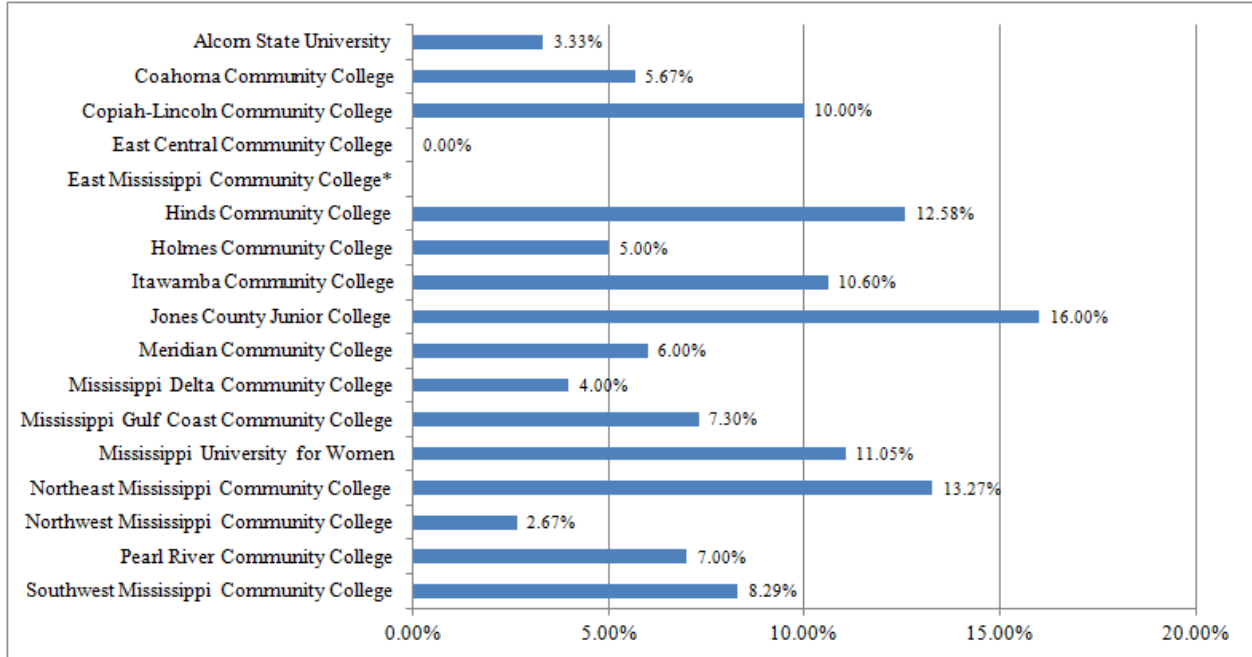
<sup>7</sup>ASU – BSN average ELA for three-year period (ELA 80% for 2010/11 & 2011/12; 70% for 2012/13).

<sup>8</sup>MC – BSN average ELA for three-year period (ELA 75% for 2010/11 & 2011/12; 70% for 2012/13).

<sup>9</sup> The 3-year median has been added to provide a representative summary of the three years reported.

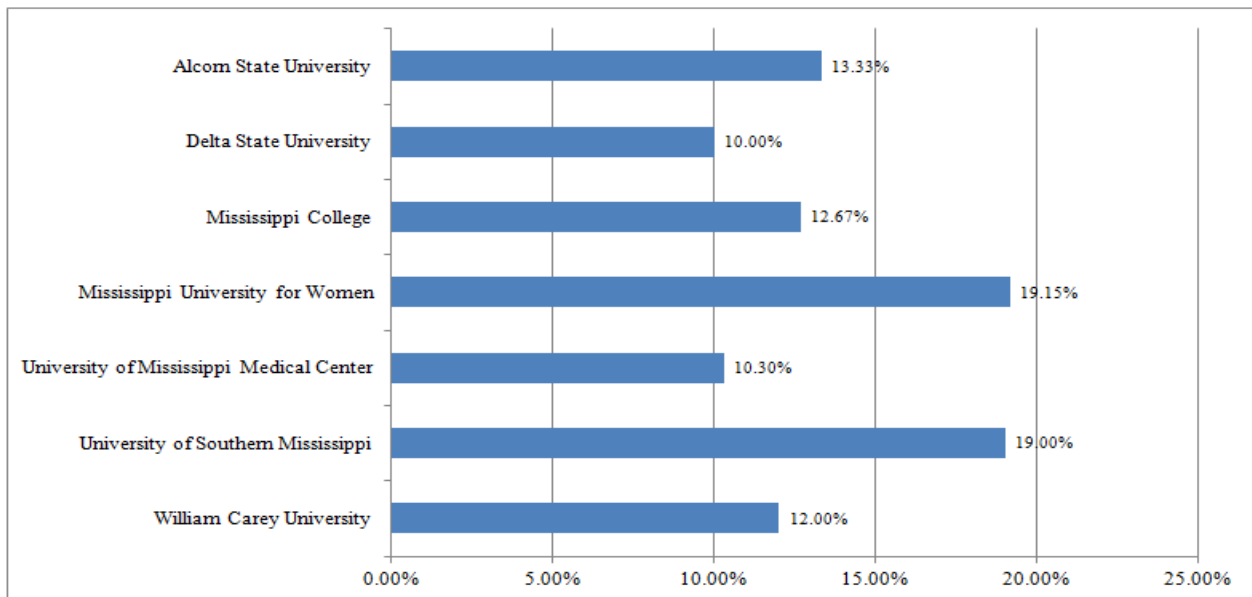
## Three-Year Median Degree Completion Rates Above or Below Expected Levels of Achievement (ELA)

### Associate Degree



\* EMCC – new program January 2010 with first graduating class December 2011.

### Baccalaureate Degree

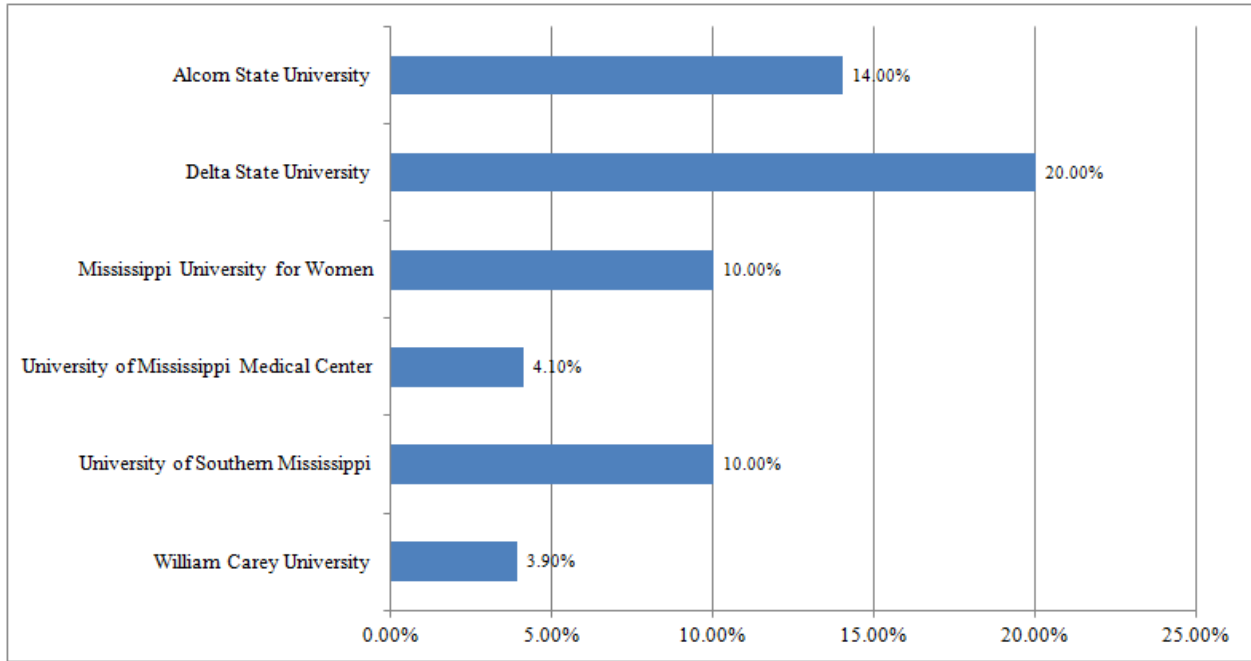


Note: Zero (0.0%) or positive values indicate median three-year completion rates meet or exceed Expected Levels of Achievement (ELA) rates. Negative values indicate completion rates fell below ELA rates.



## Three-Year Median Degree Completion Rates Above or Below Expected Levels of Achievement (ELA)

### Masters Degree



Note: Zero (0.0%) or positive values indicate median three-year completion rates meet or exceed Expected Levels of Achievement (ELA) rates. Negative values indicate completion rates fell below ELA rates.

## Nurse Practitioner Certification Rates Calendar Years 2010-2012

**STANDARD VI: Outcomes 2. c. Certification Pass Rates:** *Annual certification exam pass rates for all test takers (1<sup>st</sup> and repeat) will be at 80% or above over a three-year period.*

College/University Nursing Program	2010	2011	2012	3-Year Median <sup>1</sup>
Alcorn State University	100%	100%	100%	<b>100%</b>
Delta State University	100%	100%	100%	<b>100%</b>
Mississippi University for Women	100%	95.00%	100%	<b>100%</b>
University of Mississippi Medical Center	100%	100%	95%	<b>100%</b>
University of Southern Mississippi	76.66%	100%	100%	<b>100%</b>

<sup>1</sup> The 3-year median has been added to provide a representative summary of the three years reported.

## National Accreditation Status and Site Visit Schedule

### III. STANDARDS FOR ACCREDITATION. *All Nursing Education Programs must be accredited by a national nursing education accrediting body (ACEN or CCNE).*

Nursing Program	Accreditation Status		Date of Next Accreditation Visit
	ACEN*	CCNE**	
<b><i>Associate Degree</i></b>			
Alcorn State University	Continuing Accreditation		Spring 2015
Coahoma Community College	Candidacy Status		Fall 2014
Copiah-Lincoln Community College	Continuing Accreditation		Spring 2018
East Central Community College	Continuing Accreditation		Fall 2018
East Mississippi Community College	Initial Accreditation		Fall 2016
Hinds Community College	Continuing Accreditation		Fall 2018
Holmes Community College	Continuing Accreditation		Spring 2019
Itawamba Community College	Continuing Accreditation With Conditions		Fall 2014 (Report)
Jones County Junior College	Continuing Accreditation		Fall 2018
Meridian Community College	Continuing Accreditation		Spring 2018
Mississippi Delta Community College	Continuing Accreditation With Conditions		Fall 2015 (Report)
Mississippi Gulf Coast Community College	Continuing Accreditation		Spring 2014
Mississippi University for Women	Continuing Accreditation		Fall 2021
Northeast Mississippi Community College	Continuing Accreditation		Spring 2015
Northwest Mississippi Community College	Continuing Accreditation		Fall 2018
Pearl River Community College	Continuing Accreditation		Spring 2019
Southwest Mississippi Community College	Continuing Accreditation With Conditions		Fall 2014 (Report)
<b><i>Baccalaureate/Higher Degree</i></b>			
Alcorn State University	Continuing Accreditation (BSN) Continuing Accreditation With Conditions (MSN)		Fall 2015 BSN Spring 2015 MSN (Report)
Delta State University		Continuing Accreditation Initial Site Visit	Fall 2020 BSN/MSN Spring 2015 DNP
Mississippi College		Continuing Accreditation	Spring 2022 BSN
Mississippi University for Women		Continuing Accreditation Initial Site Visit	Spring 2020 BSN/MSN Date Pending - DNP
University of Mississippi Medical Center		Continuing Accreditation Initial Accreditation	Spring 2022 BSN/MSN Spring 2017 DNP
University of Southern Mississippi <sup>1</sup>		Continuing Accreditation Initial Accreditation	Spring 2022 BSN/MSN Spring 2017 DNP & NAP
William Carey University		Continuing Accreditation	Spring 2022 BSN/MSN
Mississippi Education Consortium for Specialized Advanced Practice Nursing (MECSAPN: ASU, DSU, MUW, UMMC, & USM)		Initial Accreditation Gerontological NP & Psych/Mental Health NP	Spring 2016

\*ACEN – Accreditation Commission for Education in Nursing (formally known as NLNAC)

\*\*CCNE – Commission on Collegiate Nursing Education

<sup>1</sup>USM Nurse Anesthesia Program - Initial Accreditation by the Council on Accreditation of Nurse Anesthesia Educational Programs